



Dragonflies



Damselflies

A First Guide to the Dragonflies (Odonata) of Jalisco, Mexico

A contribution to the study of Odonata biodiversity in Jalisco, Mexico.
This PDF includes all species known from current records, including
scientific and private collections, iNaturalist and other sources.

All photos are © Copyrighted.

There is a glossary at the end of this PDF.

The companion website has a link to the Excel Chart
with Jalisco's species by municipality and species maps.

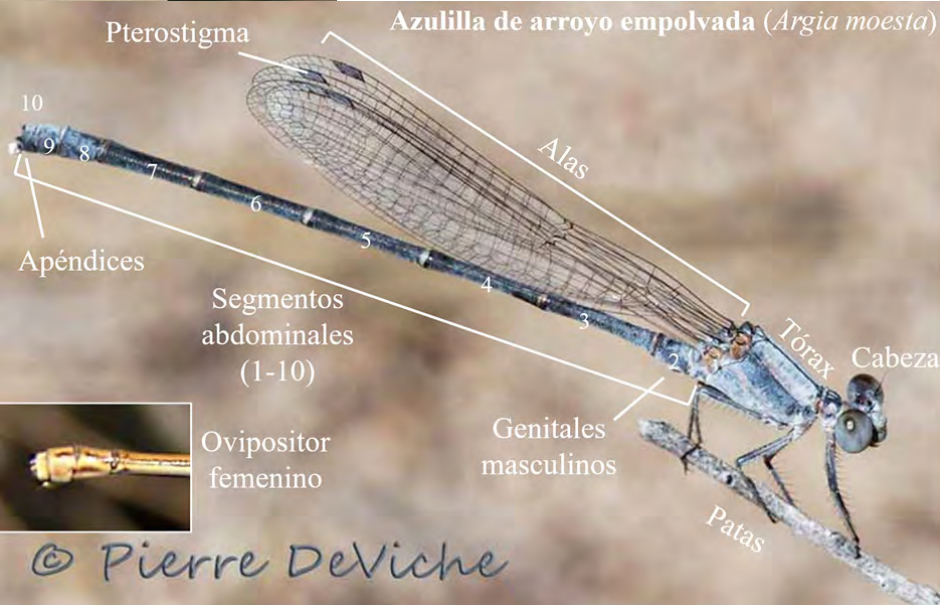
=!= =!= =!= =!= =!= =!= =!= =!= =!= =!= =!= =!=

For help with identifications &/or to make a photo contribution, put your photograph up on iNaturalist (<https://www.inaturalist.org>)
or contact Kathy Biggs - azalea@sonic.net

The parts of a dragonfly's body labeled



The parts of a damselfly's body labeled



CONTENTS/INDEX

Parts of Dragonfly & Damselfly Bodies, 2
About/HowtoUseThisGuide,4
InformationaboutDragonflies,4

Suborder I. Dragonflies, 5

Part I. Skimmers, 6

Carmine Skimmer,7
Roseate Skimmer,8
Slender Skimmer,9
Red Pondhawk,10
Flame-tailedPondhawk,11
Claret Pondhawk,12
Red-mantled Dragonlet,13
Red Rock Skimmer,14
Mayan Setwing,15
Cardinal Meadowhawk,16
Neon Skimmer,17
FlameSkimmer,18
Needham Skimmer,19
Hercules Skimmer,20
Red-tailed Pennant,21
Red Saddlebags,22
Vermilion Saddlebags,23
Striped Saddlebags,24
Variegated Meadowhawk, 25
Mexican Amberwing, 26
Eastern Amberwing, 27
Slough Amberwing, 28
Wandering Glider, 29
Spot-winged Glider, 30
Hyacinth Glider, 31
Dwarf Glider,32
Garnet Glider,33
Aztec Glider,34
Brown Setwing,35
Black Setwing,36
Seaside Dragonlet,37
Plateau Dragonlet,38
Blue Rock Skimmer,39
Blue Dasher,40
Western Pondhawk,41
Eastern Pondhawk,42

Great Pondhawk,43
Pin-tailed Pondhawk,44
Black Pondhawk,45
Blue-eyed Setwing,46
Thornbush Dasher,47
Spot-tailed Dasher, 48
Square-spotted Dasher,49
Three-striped Dasher,50
Dusky Dasher,51
Black Dasher,52
Upland Dasher,53
undescribed Dasher, 54
Sierra Made Sylph,55
Jade-striped Sylph,56
White-tailed Sylph,57
Delta-spotted Sylph,58
Slender Clubskimmer,59
Vivacious Clubskimmer,60
Common Blue-eye,61
Straw-colored Sylph,62
Evening Skimmer,63
Black-wingedDragonlet,64
Filigree Skimmer,65
Desert Whitetail,66
Hoary Skimmer,67
Gray-waisted Skimmer,68

Part II. Spiketails, 69

Apache Spiketail, 69

Part III. Clubtails, 70

Zebra-stripedSanddragon,71
*SplendidSanddragon,72
Mexican Sanddragon,73
undescribedSanddragon,74
GraySanddragon,75
Belyshevi'sSanddragon,76

Broad-striped Forceptail,77
Narrow-striped Forceptail,78
Angle-tippedForceptail,79
Two-stripedLeaftail,80 West
MexicanLeaftail,81 Pacific
Leaftail,82
Luis's Leaftail, 83
Yellow-legged Ringtail, 84
One-striped Ringtail, 85
Straight-tipped Ringtail, 86
Boa Ringtail, 87
Plateau Ringtail, 88
AztecClubtail, 89
TehuantepecKnobtail,90

Part IV. Darners,91

Common Green Darner,92
Giant Darner, 93
Amazon Darner, 94
Blue-faced Darner, 95
Mangrove Darner, 99
Fiery Darner, 97
Pale-green Darner,98
Caribbean Darner, 99
Malachite Darner, 100
Secretive Darner, 101
Turquoise-tipped Darner,102
Black-tailed Darner, 103
Blue-eyed Darner, 104
Diztler's Darner, 105
Bar-sided Darner, 106
TwilightDarner, 107
Helen's Darner, 108

Suborder II. Damselflies, 109

Part V. Jewelwings, 110

American Rubyspot, 111
Calvert's Rubyspot, 112
Canyon Rubyspot, 113
Smoky Rubyspot, 114
Highland Rubyspot, 115
Racket-tipped Rspot, 116
Bronze Rubyspot, 117

Part VI. Pond Damsels, 118

Painted Damsel, 119
Big Red Dancer, 120
Fiery-eyed Dancer, 121
Amethyst Dancer, 122
SpringwaterDancer, 123
Spine-tipped Dancer, 124
VariableDancer,125
CeruleanDancer, 126
CelestialDancer,127
Sierra MadrDancer, 128
Harkness'sDancer, 129
ApacheDancer, 130
Aztec Dancer, 131
Anna's Dancer,132
Yaqui Dancer, 133
Tarascan Dancer, 134
Sabino Dancer, 135
Oculate Dancer, 136
Ulmic Dancer, 137
TezpiDancer,138
DuskyDancer,139
Powdered Dancer, 140
PurpleDancer,141
May'sDancer,142
NeotropicalBluet,143
Claw-tippedBluet,144
FamiliarBluet,145

Arroyo Bluet, 146
West Mexican Yellowface, 147
Mexican Forktail, 148
Rambur's Forktail, 149
Tiny Forktail,150
Black-fronted Forktail, 151
Citrine Forktail, 152
Black and White Damsel, 153
Orange-striped Threadtail, 154
Amelia's Threadtail, 155
Ruddy Threadtail, 156
Desert Firetail, 157
Hyacinth Firetail, 158
Striped Firetail, 159
Middle American Pearlwing, 160
Red-tipped Swampdamsel, 161
Cream-tipped Swampdamsel, 162
Lemon-tipped Helicopter, 163

Part VII. Spreadwings, 164

Great Spreadwing, 165
Plateau Spreadwing,166
Blue-striped Spreadwing, 167
Tikal Spreadwing,168
Chalky Spreadwing,169

Part VIII. Other Families, 170

Shadowdamels, 170
Desert Shadowdamsel, 170
Bannerwings, 170
Blue Cora, 171

Glossary, 172

List of Photographers, 173

About/How to Use This Guide

ORGANIZATION

This guide is organized first by suborder and then within suborder by family. The families are ordered from most to least often seen. Within families, the dragonflies are ordered by color and similarity with the most frequently seen species followed by less frequently seen species. The dragonflies are grouped within genus by color except for where one species looks much more like those in another genus. Because dragonflies change their color as they mature, color is not always the best indicator of species, but it is what most amateurs notice first.

PHOTOS

On each page a mature male is presented first, followed by a female. Sometimes when a photo of a female has yet to be acquired, a second male is shown. Other times a detail is presented. Be aware that young males start life looking like a female.

When the author has found no photographs available, sketches are provided when possible.

INFORMATION

Below or to the side of the male image is text describing the male, then the female of the species. Similar species may be mentioned. Behavior may be mentioned. The habitat where the species breeds is described and then the known flight season is listed. Dragonflies can fly ~48 KPH (30 MPH) and thus can be found far from water while feeding. There is much still to be learned about the dragonflies of Jalisco and therefore the flight data is followed by the words thus far. YOU can make contributions to the knowledge by adding your observations to either



Dragonflies

iNaturalist.org or its sister site, Naturalista.org.

Occasionally a note is added when further information would be helpful.



Damselflies

Information about Dragonflies

LIFE CYCLE

Dragonflies begin their lives as eggs laid in water or in plant matter in the water.

The eggs hatch into tiny nymphs that eat other small creatures. A nymph may go through about 12 molts as it matures. With each molt, the wing-pads grow longer. On its last molt the nymph sheds its exoskeleton and emerges as a winged, air-breathing, flying insect.

All dragonflies are carnivores. They eat other insects and sometimes spiders. They have teeth but do not bite people unless restrained.

They do not have stingers and therefore cannot sting, but some have learned to mimic that behavior when held in the hand!

The flying dragonfly or damselfly lives for only several months to up to nearly a year.

Some species in Jalisco may be able to complete their life cycle in less than one year.

HOW TO TELL A DRAGONFLY FROM A DAMSEFLY

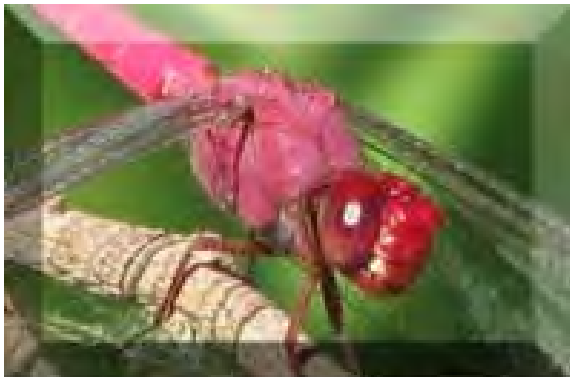
Dragonflies are usually bulkier than damselflies and are stronger fliers. Often their large eyes actually touch each other. They usually perch with their wings held out to their sides; sometimes set in a downward and forward position.

Damselflies are always thin and dainty with their eyes widely separated giving them a hammer-headed look. Many perch with their wings held together. One family spreads their wings delta-like.

SUBORDER I:

**Four Anisopteran families of dragonflies have been documented in Jalisco:
The three most common are**

I. Skimmers



Part I—Skimmers (Libellulidae) —62 species have been documented in Jalisco. Skimmers have eyes that touch. Males and females can be differently colored and they often perch on vegetation.

II. Clubtails



Part II—Clubtails (Gomphidae) —19 species have been documented in Jalisco. Clubtails have widely separated eyes and often a clubbed abdomen. They usually perch on rocks and sandbars.

III. Darners



Part III—Darners (Aeshnidae) —16 species have been documented in Jalisco. Darners have eyes that touch and patterned abdomens. They are usually in flight & hang perch on vegetation.

Part I—Skimmers (Libellulidae)

Common Name (Scientific Name) photos & description

—62 species documented in Jalisco

=====
=====

Quick Guide to the Skimmers—22 genera —the 4 most common:

Pondhawks *Erythemis*

Medium-sized, most show green or blue coloration, some show red. Perch low on the ground or on floating vegetation.



Speckled Dashers *Micrathyria*

Small and usually found on ponds or pools of rivers, all have white faces and spots atop the abdomen.



Sylphs *Macrothemis*

Medium-sized, usually found on streams, most perch on rocks and sandbars. Many have paired spots atop S7.



King Skimmers *Libellula*

Large-sized, many have brilliant colors and some have patterned wings. Perch atop vegetation.



Carmine Skimmer (*Orthemis discolor*)



photos: male and female

size: medium/large, length 49-52 mm

male: glossy red eyes & face; carmine red thorax and abdomen; wings clear with black veins including costa

female: orange-brown; somewhat obscured but complex pale pattern on thorax sides, pale stripe top center; noticeable flanges near bottom end of abdomen; leading edge of wing and costa dark

similar species: very similar to the **Roseate Skimmer** which has purplish eyes, face & frons

habitat: ponds and slow moving water

Jalisco flight season: flies all year



Roseate Skimmer (*Orthemis ferruginea*)



photos: male and female

size: medium/large, length 51-53 mm

male: eyes purple with metallic purple frons; abdomen bright lilac going to red at the tip; wings clear with sometimes reddish veins

female: tan-brown; prominent complex pale pattern on thorax sides, pale stripe top center; noticeable flanges on lower abdomen end

similar species: very similar to the more common **Carmine Skimmer** which has red eyes and face; all wing veins are dark

habitat: ponds and slow moving water

Jalisco flight season: flies all year



Roseate vs Carmine males -

they are often
much more
difficult
than this
to tell apart



Slender Skimmer (*Orthemis levis*)



photos: male and female

size: medium, length ~44 mm, wingspan ~44 mm

male: slender red abdomen with black atop S7 & around S8-10;
wide pale stripes on side of thorax; wings have yellow costa

female: slender abdomen with noticeable flanges, prominent
wide pale stripes on side of thorax

similar species: *Tramea* have color in their wings and
do not hold them down and forward

habitat: ponds and slow moving water

Jalisco flight season: months 4,6-11 thus far



Red Pondhawk (*Erythemis haematogastra*)



photos: male and young female

RARE in Jalisco - please report any sightings

size: medium/large, length 45-50 mm, wingspan 72-78 mm

male: slender red abdomen, usually with thin black rings, S1&2 expanded; brown thorax and small basal wing patches; dark face

female: shaped like male, color duller, face dark;
wingtips can be slightly colored

behavior: perches low on vegetation and wood

habitat: found at Rio del Tuito in Yelapa in 2017 & 2019

Jalisco flight season: months 1-3,12 thus far



Flame-tailed Pondhawk (*Erythemis peruviana*)



photos: male and female

size: medium, length 36-43 mm, wingspan 58-70 mm

male: flame-red abdomen contrasts with jet-black thorax; small amount of dark in basal portion of wing; black legs

female: tan face; brown thorax sides with noticeably paler top; abdomen pale brown with dark brown rectangles on side of each segment; pale stigma

behavior: perches on ground or vegetation

habitat: open marshes; heavily vegetated ponds

Jalisco flight season: months 6,10-12 thus far



Claret Pondhawk (*Erythemis mithroides*)



photos: male and female

size: medium, length ~38 mm

male: body all red with basal brown-red spot in hindwings that extends from front to back

female: light reddish brown with dark rings; pointed ovipositor; wings mostly clear with dark stigma

behavior: perches on the ground or vegetation

habitat: swampy, well-vegetated ponds & still waters

Jalisco flight season: months 1,6,11-1 thus far

Note: this may be a separate species than those found farther south



Red-mantled Dragonlet (*Erythrodiplax fervida*)



photos: male and female

size: small, 32-36 mm, wingspan ~50 mm

male: red face and eyes, abdomen and thorax red with black patterning; dark red basally on each wing

female: like male but can be tan where male is red; ovipositor points straight down

habitat: ponds and lagoons, slow moving water

Jalisco flight season: months 1-4,9,11,12 thus far



Red Rock Skimmer (*Paltothemis lineatipes*)



photos: male and female
size: medium/large, length 44-54 mm,
wingspan 90-95 mm
male: abdomen intricately patterned with rusty red and black; face and eyes rusty red; rusty red on inner wings usually almost to nodus, dark stigma; thorax can be olive-brown on sides
female: tan/brown; intricate pattern;
no color in wings; no red on body
similar species: **Flame Skimmer** has no black on abdomen
behavior: lands on rocks midstream
habitat: rocky streams
Jalisco flight season: months 2,4,7-12 thus far



Mayan Setwing (*Dythemis maya*)



photos: male & female

size: medium, length 40-45 mm, wingspan 72-82 mm

male: red body, without any black: red-orange basal wing patches; black stigma; bright red face and eyes; no white on thorax sides

female: like male but orange-brown with dark wingtips

similar species: **Cardinal Meadowhawk** has white dot on side of thorax and usually a small amount of black at base of wings

behavior: wings held down and forward ("set")

habitat: ponds in the open, slow moving water

Jalisco flight season: months 1,2,5-12 thus far



Cardinal Meadowhawk (*Sympetrum illotum*)



Dave Biggs

Ray Bruun

photos: male and female

RARE in Jalisco - please report any sightings

size: small/medium length 32-40 mm, wingspan 55-60 mm

male: cardinal red head, thorax, abdomen, wing veins; red on wings is diffuse, only close to body and near the leading edge, wings usually have small dark streaks at extreme base; thorax sides have two white spots/dashes; body with no black, stubby appearance; red legs

female: less colorful; pale red legs; abdomen wider

habitat: ponds, lakes

Jalisco flight season: flies all year

Neon Skimmer (*Libellula croceipennis*)



photos: male & female

size: medium/large, length 46-59 mm, wingspan 72-90 mm

male: very wide bright neon red/pink abdomen; thorax and underside can be tawny; red on wings only adjacent to body and near leading edge - it does not extend to the nodus; the stigma on each wing has a dark outline

female: wide abdomen is tan/orange with a noticeable pale stripe along the top of the thorax; wings mostly clear, lacking a strong colorful streak, and the 2nd vein from front is NOT yellow

similar species: male **Flame Skimmer** has color in the wings that extends to the nodus fore to back; female **Flame Skimmers** have more color in their wings with the 2nd vein yellow; their abdomens are not as wide (see next page)

habitat: ponds in the open and slow moving water

Jalisco flight season: flies all year

Flame Skimmer (*Libellula saturata*)



photos: male and female

size: medium/large, length 50-60 mm, wingspan 85-93 mm

male: red-orange face, thorax, abdomen, legs, appendages; red color in the wing extends to the nodus fore to back with a darker basal streak;

2nd vein yellow

female: tan/orange with noticeable pale stripe top of thorax; wings have orange streak at leading edge with the 2nd vein yellow; noticeable flanges near end of abdomen; a few females become male-like in their coloration

similar species: **Neon Skimmer** is more pink, has wider abdomen; **Needham's Skimmer** has the color in the wing confined to leading edge

habitat: ponds in the open and slow moving water

Jalisco flight season: months 1,3-11 thus far



Needham's Skimmer (*Libellula needhami*)



Alfredo Dorantes Euan



Carlos G Velazco-Macias

photos: male and female

RARE in Jalisco - please report any sightings

size: medium/large, 45-57 length mm, wingspan 73-83 mm

male: red color in the wing confined to leading edge, ; dark streak atop abdomen thickens towards end

female: like male but pale yellow color, dark wingtips, pale stigma

similar species: Neon Skimmer is more pink, has wider abdomen with no black

habitat: ponds, lakes; usually found near the coast

Jalisco flight season: month 8 thus far

Hercules Skimmer (*Libellula herculea*)



© Netta Smith

© Netta Smith

photos: male and female

RARE in Jalisco - please report any sightings

size: large, ~55 mm, wingspan ~85 mm

male: cherry red abdomen with black spots atop of S7 & 8, black tip; thorax becomes silvery pruinose on the sides, shiny dark on top; black legs; clear wings with dark veins and stigma

female: like male but lacks silver thorax sides and abdomen is wider

habitat: ponds, lakes, canals

Jalisco flight season: 7-9, thus far

Red-tailed Pennant (*Brachymesia furcata*)



photos: male and female

size: medium, 38-46 mm, wingspan 66-73 mm

male: Meadowhawk-like; stocky with S2 expanded; face & abdomen red; thorax brown; each abdomen segment with thin dark ring, black spots atop segment 8 & 9; wings have dark veins, amber at base with long stigma; jet black legs;

"ski-tipped" appendages

female: brown with pale stripe between wings & at abdomen base; small black spots atop last segments

similar species: Neon and Flame Skimmers have pale legs and color in the wings

habitat: ponds, lakes, canals

Jalisco flight season: months 5-7,10,11 thus far

Red Saddlebags (*Tramea onusta*)



photos: male and female

size: medium, length 42-45 mm, wingspan 80-90 mm

male: red body; irregular dark red basal patch in hindwings, often with large clear area near the body, abdomen has black atop last 3 segments

female: like male but orange-brown, clear wingtips;
dark spots atop segments 8-9

behavior: oviposit in tandem with female dropping by herself to water surface and then picked back up by the male ("Tramea Dance")

habitat: ponds

Jalisco flight season: months 4-12 thus far



Vermilion Saddlebags (*Tamea abdominalis*)



photos: male and scan of female

size: medium, length 44-50 mm, wingspan 79-87 mm

male: brown/red thorax without stripes; slender red abdomen with black diamond shaped patches atop last 3 segments; wings have narrow dark red basal patch

female: like male but orange-brown

behavior: oviposit in tandem with female dropping by herself to water surface and then picked back up by the male ("Tamea Dance")

habitat: ponds

Jalisco flight season: months 4-7 thus far

Striped Saddlebags (*Tamea darwini*) *note: formerly T. calverti*



photos: male and female

RARE in Jalisco - please report any sightings

size: medium, length 45-49 mm, wingspan 80-86 mm

male: 2 pale stripes on sides of thorax; basal color in wing dark and narrow; abdomen tip all dark

female: tawny; 2 broad side stripes on thorax; top of S8-10 of abdomen black

similar species: **Antillean Saddlebags** lacks stripes on thorax sides as does **Red Saddlebags** which has larger amount of red at wing bases

behavior: oviposit in tandem with female dropping by herself to water surface and then picked back up by the male ("Tamea Dance")

habitat: warm shallow ponds and other quiet waters, including brackish and temporary

Jalisco flight season: July thus far

Variegated Meadowhawk (*Sympetrum corruptum*)



photos: male and female

size: medium, 37-42 mm, wingspan 60-64 mm

male: quite variable; olive-green/gray and reddish plaid, turns redder as it ages, unique white "porthole-like" spots low on abdomen; thoracic stripes not always complete but end in yellow spot; cranberry eyes; bi-colored stigma

female: like male but less red; more muted &/or pastel

habitat: all slow waters

behavior: known migrant

Jalisco flight season: months 7,8,10-12 thus far

Mexican Amberwing (*Perithemis intensa*)



photos: male and female

size: very small, length 23-29 mm, wingspan 41-44 mm

male: small and stubby; all orange colored, including the wings which have pale yellow-orange stigmas and veins, the forewing triangle has 2 cells and the hindwing triangle has cross-veins; the thorax is without bold pale patches; immatures are more yellow

female: like male but the wings have amber-orange bands with dark spots, darker stigmas than male with the forewing and hindwing triangles the same as on the male

behavior: perches in the sun, often on twigs, close to water surface

similar species: **Slough Amberwing** has orange-red stigma, the outside of the legs are dark and it prefers to perch in the shade; the

Eastern Amberwing has whiteish patches on the sides of the thorax, the stigma is red-orange and there is a dark spot at the outer angle of the wing's triangles.

habitat: slow waters and ponds **Jalisco flight season:** flies all year



Eastern Amberwing (*Perithemis tenera*)



© Pierre Deviche



© Pierre Deviche

photos: male and female

size: very small, length 19-25 mm, wingspan 33-43 mm

male: tiny and stubby; wings are yellowish-orange, they may have small dark spots, stigma is reddish; thorax is brownish with two pale side stripes; abdomen is more patterned than that of the **Mexican Amberwing**

female: brown body; variable dark patched/spotted wings

similar species: the **Mexican Amberwing** has pale stigma and veins, **Slough Amberwing** has outside of legs dark

behavior: perches in the sun; mimics wasp behavior by waving wings and abdomen up and down

habitat: ponds, lakes, slow streams, even brackish waters

Jalisco flight season: months 2-10 thus far

Note: Recently the species *P. mooma* was merged with this species in this area (May 2020).

Slough Amberwing (*Perithemis domitia*)



photos: male and female

size: very small, length 22-25 mm, wingspan 34-41

male: tiny and stubby; sides of thorax with pale stripes; wings reddish-orange with red stigma; outside of legs are dark

female: brown body; basal half of wings amber with dark spots

similar species: the **Mexican Amberwing** has pale stigma

behavior: prefers to perch in the shade

habitat: ponds, puddles in slow waters

Jalisco flight season: flies all year

<Slough vs Mexican males >



Wandering Glider (*Pantala flavescens*)



photos: females

size: medium, 45-49 mm; wingspan ~76 mm

male & female: sexes both marked the same; golden yellow colored with dark line atop abdomen; clear wings, hind wing very wide

similar species: **Spot-winged Glider** is browner and has a small basal dark spot on hind wings

behavior: known migrant, almost constantly in flight; hang perch

habitat: fish-less ponds in the open; slow moving water

Jalisco flight season: months 1-3,6-11 thus far



Spot-winged-Glider (*Pantala hymenaea*)



photos: males

size: medium, 45-47 mm; wingspan ~75 mm

male & female: body earth-tones with round dark basal spot on hindwings (spot can be difficult to see)

behavior: almost constantly in flight; hang perch

habitat: ponds in the open; slow moving water

behavior: known migrant, almost constantly in flight; hang perch

similar species: **Wandering Glider** is more golden, lacks basal wingspot

Jalisco flight season: months 7-11 thus far

Hyacinth Glider (*Miathyria marcella*)



photos: male and female

size: small/medium, 35-38 mm, wingspan 58-66 mm

male: straw-colored abdomen with amber-tinted wings, hindwing wide with noticeable straight dark diffuse basal wing-band and golden wing-veins

female: like male, white stripe on thorax side

similar species: **Aztec Glider** has more patterned abdomen and less color in the wings

behavior: almost constantly in flight; hang perch

habitat: ponds in the open; slow moving water where water hyacinth is plentiful

Jalisco flight season: months 2,3,5-12 thus far



Dwarf Glider (*Miathyria simplex*)



photos: male and female

size: small, length 28-32 mm, wingspan 48-52 mm

male: abdomen dark red; wide hind wing has a large brown patch at the base which reaches outward to cover most of triangle but leaving a clear "window", leading veins show red all the way out to the very small stigma; frons NOT metallic violet

female: not all are as thin as this photo; like male but abdomen patterned yellow and brown; no color in wings beyond patch

behavior: almost constantly in flight; hang perch

habitat: slow moving waters

Jalisco flight season: months 5,10 thus far

Garnet Glider (*Tauriphila australis*)



photos: male and female

size: medium, length 40-47 mm; wingspan ~75 mm

male: wide hind wings with semicircular basal dark patch, some basal veins red; abdomen red with thin black rings; solid dark thorax

female: like male but less colorful; sometimes only a hint of color in the wings

similar species: **Red Pondhawk** has an expanded first & second segments

behavior: almost constantly in flight; hang perch

habitat: ponds, rivers streams and canals with water hyacinths

Jalisco flight season: month 6 thus far

Aztec Glider (*Tauriphila azteca*)



photos: male and female
size: medium, 40-44 mm; wingspan ~75 mm
male & female: earth-toned with strongly patterned abdomen; wide hind wing with semi-circular basal dark patch, small stigma
similar species: **Garnet Glider** has red abdomen;
Hyacinth Glider has colorful wing veins
behavior: almost constantly in flight; hang perch
habitat: ponds in the open; slow moving water
Jalisco flight season: months 5-10 thus far

Brown Setwing (*Dythemis sterilis*)



photos: male and female

size: medium and thin, length 37-42 mm, wingspan 30-35 mm

male: very slender abdomen with paired slender triangles, when mature it is dark pruinose; thorax with complex thin lines; face pale with eyes capped in brick red; slight basal wing patches

female: like male but extreme wing tips usually dark

habitat: slow moving streams, rivers and ponds

Jalisco flight season: months 1-4,6-12 thus far

Black Setwing (*Dythemis nigrescens*)



photos: mature and female

size: large but thin, length 37-45 mm,
wingspan 62-72 mm

male: when mature, pruinose dark thorax with thin abdomen; face and eyes dark with dark metallic frons; no basal wing patches, long dark stigma

female: like immature male with pale marks on thorax and abdomen; wing tips brown; dark metallic frons

habitat: slow moving water

Jalisco flight season: months 1-3,5-12 thus far



Seaside Dragonlet (*Erythrodiplax berenice*)



photos: male & both male-like & spotted form females

size: small, length 31-35 mm, wingspan 44 -56 mm

male: all black when mature; wings clear with stigma laterally bi-colored, NO small basal dark patch;
immature has yellow on segments 1-7; eyes reddish above

- female:** (2 forms) 1. the male-like form has S1-7 remaining yellow longer than males; no spots near wing nodus;
abdomen becomes dark before thorax
2. spotted form juvenile female has thorax with yellow and black "tiger striping" and wings with brown clouding at nodus

habitat: saline waters; usually found along the coast at sea level

Jalisco flight season: flies all year

Plateau Dragonlet (*Erythrodiplax basifusca*)



Cindy Skeie



© Dave Biggs

photos: male and female

size: small, length 24-34 mm, wingspan 43-53 mm

male: dark abdomen develops thin pale blue pruinosity on abdominal S2-7; face tawny to metallic black; wings clear except hind wing often with small basal dark amber patch, long stigma

female: stubby, golden yellow, interrupted brown side stripe; dark rectangular triangles on S4-8; long stigma

habitat: marshy areas along moving water

Jalisco flight season: flies all year

Blue Rock Skimmer (*Paltothemis cyanosoma*)



photos: male and appendages from paratype specimen

RARE - please report any sightings

size: medium/large, length 48-51 mm, wingspan ~90mm

male: frons metallic purple; body dark with blue pruinosity on thorax, S1-3&10, slight blue banding at segments; hindwing lacks a basal spot

female: dark labrum on face, thorax brown, prothorax pale brown with

dark brown stripes; abdomen dark brown with yellow spots

behavior: perch on exposed rocks at sunny spots

habitat: streams in woodland or forests at low altitude

Jalisco flight season: months 1,8,10,11

Blue Dasher (*Pachydiplax longipennis*)



photos: male and female

size: medium, length 32-45 mm, wingspan 48-50 mm

male: pruinose blue, developing dark tip, tan under segment 1-3; striped thorax can become all blue; teal green/blue eyes; distinctive white face with black between the eyes; wings, often held downward, can show brown tinted areas; thorax often becomes completely pruinose; no pale spots atop abdomen

female: rectangular buff marks on dark background; no other is like it; white face

similar species: Western and Eastern Pondhawks have green faces; the Speckled Dashers (*Micrathyria*) have spots atop abdomen

behavior: unlike Pondhawks, don't perch on ground or floating vegetation unless it is windy

habitat: ponds, slow waters

Jalisco flight season: months 5-8 thus far

Western Pondhawk (*Erythemis collocata*)



© Ricardo Arredondo



©Kevin Meza Fernández

photos: young male and female

Rare in Jalisco - please report all sightings

size: small/medium, length 39-42 mm, wingspan 63-65 mm

male: pruinose blue with bright green face; deep blue eyes; dark appendages; immature like female, the blue color is pruinosity where the thorax is the last to turn blue, no dark patches/spots/bands

female: emerald green body with a thin dark line along top, often showing some yellow; abdomen much thicker than **Great Pondhawk**

similar species: **Eastern Pondhawk** males have white appendages as do the females which are also more patterned;

Blue Dasher has white face as do **Speckled Dashers**

behavior: usually perches low, often on or near the ground or on floating vegetation; known to eat other dragonflies

habitat: ponds, pools in creeks

Jalisco flight season: month 7 thus far

Eastern Pondhawk (*Erythemis simplicollis*)



© Carlos G Velazco-Macias



© Carlos G Velazco-Macias

photos: male and female

size: medium, length 36-48 mm, wingspan 63-65 mm

male: pruinose blue with bright green face; deep blue eyes; white appendages; immature colored like female with the blue colored pruinosity on the thorax being the last so the green stays the longest there; wings with no dark patches/spots/bands

female: emerald green body with pale and dark areas along abdomen; white appendages; spout-like ovipositor

similar species: **Western Pondhawk** males have dark appendages as do the females which are also less patterned; **Blue Dasher** has white face as do **Speckled Dashers**

behavior: usually perches low, often on or near the ground or on floating vegetation; known to eat other dragonflies; males display white appendages held upward in a spiraling duel face to face with other males

habitat: ponds, creek pools

Jalisco flight season: months 9,10 thus far [check photos/specimens closely for appendage color]

Great Pondhawk (*Erythemis vesiculosa*)



photos: male and female
size: large and long, length 55-65 mm, wingspan 80-82 mm
male: narrow long abdomen with dark and green bands;
green face, eyes green-gray; appendages white;
juvenile has green stigma
female: like male; eyes dark; thin abdomen with short
inconspicuous ovipositor
behavior: often flies with abdomen raised 30 degrees;
perches with wings held forward; wary
habitat: ponds; pools of creeks and rivers
Jalisco flight season: months 1-4,6-12 thus far



Pin-tailed Pondhawk (*Erythemis plebeja*)



photos: male and 2 females

size: medium but very long, length 41-48 mm,
wingspan 74-75 mm

male: when fully mature, all black including face; clear wings with small dark basal patch & pale yellow stigma; legs all black; long narrow abdomen with bulbous S1-2, yellow appendages; when immature, abdomen patterned yellow & dark

female: like immature male; much less black on abdomen; noticeable scoop-like ovipositor under S9 points straight downward; wings clear; can become almost as dark as male with maturity

similar species: female **Eastern & Western Pondhawks** are not this thin nor long; **Black Pondhawk** has wider abdomen

behavior: perches with wings held forward

habitat: slow moving water

Jalisco flight season: months 1-4,6-12
thus far



Black Pondhawk (*Erythemis attala*)



photos: males and females

size: medium, length 42-44 mm, wingspan 69-80 mm

male: when mature all black except for pale appendages;

hindwings with large semicircular black basal spot

female: paired dull yellow spots atop S3-6; basal spot on hind wing is smaller

and paler than on male; conspicuous spout-like ovipositor under tail end

points straight down; some females become all black

habitat: ponds with shaded edges - often found in dense vegetation

Jalisco flight season: months 1-5,9-12 thus far

Blue-eyed Setwing (*Dythemis nigra*)



© Dave Biggs

photos: males and female in flight
RARE in Jalisco - please report any sightings
size: small/medium, 34-41 mm, wingspan 56-58 mm
male: blue eyes; white face, top of frons dark metallic blue; wings held forward; patterned thin abdomen with largest spot on S7, no spot on S6
female: metallic blue frons; wingtips may be dark; 2 broad yellow spots sides of S2; small rounded bluish spot side of S7
similar species: **Thornbush Dasher** lacks facial metallic dark spot; abdomen has larger pale spots including S6
habitat: slow moving water
Jalisco flight season: 1,2,10,11 thus far



© Juan Cruzado Cortés



© Kathy Biggs

Thornbush Dasher (*Micrathyrina hagenii*)



photos: male and female

size: small, length 31-36 mm, wingspan 45-52 mm

male: white face; patterned abdomen with twin spots on S7 that have rounded notches top and bottom;

stripe on side of thorax forked at the top

female: like male but more heavily patterned atop the wider abdomen, with paired elongate spots

similar species: **Blue-eyed Setwing** has pale markings that are quite small until the large ones on S7, lacks spots atop S6;

Square-spotted Dasher - large spots on S7 have square shape without notches, slightly clubbed, thinner stripes atop other segments

habitat: ponds, slow moving water

Jalisco flight season: months 1,2,4,5,7-11 thus far



Spot-tailed Dasher (*Microthyria aequalis*)



photos: male and female

size: small, length 28-33 mm, wingspan 45-52 mm

male: white face, blue-green eyes; mostly pruinose blue-gray abdomen is slender, especially the mid-segments, widened at end with a pair of rearward pointing twin pale triangles atop S7; the striped thorax top and sides are more noticeable in immatures, the abdomen turns darker pruinose as it matures

female: can become pruinose similar to male but often heavily patterned on the thorax and with a double line of dots atop the abdomen culminating in two rearward facing triangles on S7; darkened wash near wingtips

similar species: abdomen of **Dusky & Square-spotted Dashers** have square spots; **3-striped Dasher** has trapezoidal spots; **Blue Dasher** lacks spots

behavior: female lands to oviposit, fastening eggs to the underside of a leaf

habitat: ponds, slow moving water

Jalisco flight season: flies all year

Square-spotted Dasher (*Micrathyrina ocellata*)



photos: males and a female

size: medium, length 28-33 mm, wingspan 45-52 mm

male: white face; pale stripes on the thorax sides and front with a dark stripe extending down from the rear edge of the hindwing; abdomen is distinctly shorter than the hindwing, end of abdomen is expanded with paired spots that are more square-shaped than elongate, lacking notches, upper appendages are convergent

female: heavily patterned on the thorax and abdomen, with twin spots near an expanded abdomen tip

similar species: **Spot-tailed Dasher** - rearward pointed spots on tail; **Dusky Dasher** has pruinose thorax; **Caribbean Dasher** has abdomen longer than hindwing

habitat: ponds, slow moving water

Jalisco flight season: flies all year

Three-striped Dasher (*Micrathyria didyma*)



photos: male and female

size: small/medium, length 33-37 mm, wingspan 52-67 mm

male: blue-green eyes; white face; swollen end of abdomen with white twin trapezoidal spots which are very narrowly separated; side of thorax has 3 parallel but uneven black and pale green stripes

female: like male but abdomen less clubbed at tip

habitat: ponds in the open; slow moving water

Jalisco flight season: flies all year



Dusky Dasher (*Micrathyrja schumanni*)



photos: male and female

size: small, length 30-33 mm,
wingspan 52-57 mm

male: like **Spot-tailed Dasher** but spots atop tail squared,
not pointed at end, end of 'tail' black; frons metallic blue

female: an almost plain, brown abdomen with dark rings

behavior: perches on twigs and vegetation

habitat: ponds, slow moving waters,

Jalisco flight season: months 1,5-10,12 thus far



Black Dasher (*Micrathyrina atra*)



photos: male

RARE in Jalisco - please report any sightings

size: small, length ~32 mm, wingspan ~66 mm

male: white face, blue-green eyes; pruinose blue-gray on only S1-3 rest of abdomen is black and not expanded, spots atop S7 are rectangular; the thorax top is black and the sides are mildly marked

female: like male but with less intense coloration and dark wingtips

similar species: the **Dusky Dasher** is not black atop the thorax

habitat: ponds, slow moving water, especially with mangroves

Jalisco flight season: month 8 thus far

Upland Dasher (*Micrathyria paulsoni*) **NEW species described 2020**



photos: male and female **RARE in Jalisco** - please report any sightings
size: medium, length 37 mm, wingspan ~56 mm
male: white face, blue-green eyes; two wide pale green stripes on sides of thorax, thorax top is black with thin pale stripes; pruinose blue-gray on only S1-3, S4&5 with small pale triangular marks on sides, S6 all black, spots atop S7 are rectangular
female: like male but top thoracic stripes a bit wider, abdomen with S3-5 with backwards pointing darts
similar species: **Black Dasher** has fewer marks on abdominal segments & other dashers are not black atop the thorax
habitat: upland ponds surrounded by forest, slow moving water
Jalisco flight season: month 6-9 thus far



"Yelapa" Dasher (*Micrathyria cf ocellata*)



photos: males

RARE in Jalisco - please report any sightings

size: small/medium, length ~29 mm, wingspan ~47 mm

male: similar to **Square-stopped Dasher** but the pale stripes on the thorax sides form a loop at the bottom; end of abdomen somewhat more expanded than other Dasher spp. and with square-shaped spots S7

female: TBD

habitat: Rio del Tuito & environs of Yelapa

Jalisco flight season: found in January & February

Sierra Madre Sylph (*Macrothemis ultima*)



© Dave Biggs

photos: male and female

size: small, length 36-39 mm, wingspan 53-68 mm

male: dark, patterned abdomen expanded near tip with paired elongate spots atop S8; blue eyes; mirror image “L’s” atop thorax; stripes on sides of thorax joined to form a loop at top; dark face; clear wings

female: like male but with dark amber wash at tip and at base of wings

habitat: moving water

behavior: hang perch on vegetation, often on spider lily leaves

Jalisco flight season: months 1-5,8,9,11 thus far



© Terry Carr

Jade-striped Sylph (*Macrothemis inequiunguis*)



photos: male and female

size: small, length 32-36 mm, wingspan 50-62 mm

male: dark, patterned abdomen with expanded tip with paired oval spots atop S8; stripes on sides of thorax, dark face; wings have basal amber wash

female: like male but with dark wingtips

habitat: small rocky streams and rivers in the forest

behavior: hang perch on vegetation or atop leaves

Jalisco flight season: months 2,6-8 thus far

White-tailed Sylph (*Macrothemis pseudimitans*)



photos: males and female

size: medium, length 35-43 mm, wingspan 60-67 mm

male: dark species with dark "clubbed" tail which at maturity develops a large pruinose white area on S6-9; dark thorax has 2 pale blue triangular stripes on top and spots on sides; bright blue eyes; metallic blue frons

female: similar but darker brown color;
abdomen not clubbed; wing tips clear

behavior: male flies short beats over the water landing occasionally on rocks in the stream or on sand near river banks

habitat: low moving water

Jalisco flight season: flies all year

Delta-spotted Sylph (*Macrothemis hemichlora*)



© Dave Biggs

photos: males

RARE in Jalisco - please report any sightings

size: small/medium, 27-35 mm

male: blue eyes; pale, mirror-image triangles atop thorax; dark abdomen strongly patterned with pale spots & widely expanded near tip with large expanded paired tear-drop shaped spots atop segment 8;
lower thoracic stripe shaped like the letter "r"

female: like male but with dark amber wash at tip and base of wings

behavior: often perches by clinging to leaf edges

habitat: streams

Jalisco flight season: months 2,9 thus far



© Francisco Farriols Sarabia

Slender Clubskimmer (*Brechmorhoga praecox*)



photos: males and female
size: medium/large, length 47-53 mm, wingspan 72-74 mm
male: slender, somewhat clubbed abdomen with paired pale yellow spots atop S7 that are spatulate in shape; wings with two rows of cells in the anal loop, brown at base of wings; aqua eyes
female: like male but wings may be yellow or pale brown, always has brown at base of wing; abdomen not as clubbed
behavior: hang perch
habitat: moving waters of sandy rivers and streams **Jalisco**
flight season: months 1-3,6-8 thus far



Vivacious Clubskimmer (*Brechmorhoga vivax*)



photos: male and female **Rare in Jalisco** - please report any sightings

size: medium, length ~45 mm, wingspan ~72 mm

male: 2 continuous cell rows between the basal edge of the wing and the anal loop (the “boot”); S3 with green stripe on each side that does not come together with the sideways bottom green line

female: like male but less clubbed in appearance

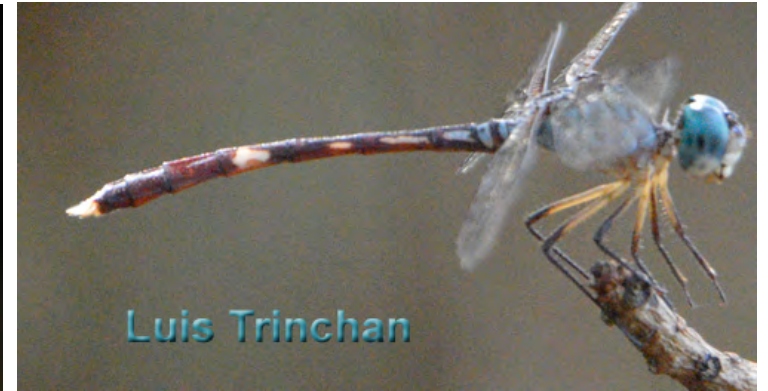
behavior: hang perch

similar species: **Slender Clubskimmer** has 3 continuous cell rows between the basal edge of the wing and the anal loop (the “boot”);

habitat: moving waters of sandy rivers and streams - found on the Horcones River below the Vallarta Botanical Gardens

Jalisco flight season: month 11 thus far

Common Blue-eye (*Anatya guttata*)



photos: males and female

RARE in Jalisco - please report all sightings

size: medium, length ~43 mm, wingspan 52 mm

male: blue eyes and thoracic marks; white face with dark spot; dark abdomen with pale blue marking on S1-3 and yellow on S4-9; appendages yellow; upper legs yellow and lower legs dark

female: like male but paler - more yellowish on thorax and abdomen

behavior: mostly perch in shade, can be found in sunlight

habitat: swampy ponds and still pools in forested streams

Jalisco flight season: months 10,11

Note: formerly *A. normalis*

Straw-colored Sylph (*Macrothemis inacuta*)



Photos: male and female

size: medium, length 41-48 mm, wingspan 66-74 mm

male: distinctive, very slender cylindrical yellowish-brown abdomen; white slashes on top and sides of thorax; pearly blue eyes

female: similar; sometimes amber tint to forewing tips and/or at hindwing base; pale legs with dark "knees and feet"

behavior: hang perch

habitat: slow moving water; sometimes ponds

Jalisco flight season: months 2,4-12 thus far

Evening Skimmer (*Tholymis citrina*)



photos: male and female

RARE in Jalisco - please report all sightings **size:** medium/large,
length 48-53 mm, wingspan ~ 75 mm

male: steel-blue eyes; long tapered pale brown body; clear wings with pale amber nodal patch on hind wing; long straight upper appendages

female: like male but with appendages spreading; both sexes have an "open-toed" anal loop in the hindwing

behavior: crepuscular; hang perches

habitat: shallow ponds and marshes

Jalisco flight season: month 6 thus far

Black-winged Dragonlet (*Erythrodiplax funerea*)



© Julio Alvarez

photos: mature male and female; atypical male
size: medium, length 38-42 mm, wingspan 52-70 mm
male: slender and black; wings black from near base to halfway between nodus and stigma (does not touch stigma), wings can be clear at base; immature has yellow on S1-7, similar to female
female: spotted form - slender black body with round black spot at hind wing base,
other form - tan/brown; with front of thorax darker than the sides; dark wingtips
habitat: ponds in the open; slow moving water
Jalisco flight season: flies all year

Note: Band-winged Dragonlet *E. umbrata* not expected in Jalisco



<-- non-typical male with clear area at base of wings is fairly common in parts of Jalisco



© Dave Biggs

Filigree Skimmer (*Pseudoleon superbus*)



photo: male and female

size: medium, length 38-45 mm, wingspan 63-73 mm

male: wings variably dark and lacy, sometimes almost all dark, but tips mostly clear; brown body with pale chevrons ages to nearly all black; eyes are striped and when mature are nearly all black

female: lace pattern on wings more open; spout-like ovipositor

behavior: perch low, often on rocks/debris/sandbars, often in oblique posture; at a distance can look just like a dry leaf!

habitat: ponds; rocky areas of rivers with slow moving water

Jalisco flight season: flies all year



Desert Whitetail (*Plathemis subornata*)



photos: male and female

RARE in Jalisco - please report any sightings

size: medium, length 40-52 mm, wingspan 64-76 mm

male: pruinose white abdomen; wings with 2 narrow zigzag black bands, middle third usually fills in dark, basal half of wings have extensive white pruinosity; dark appendages

female: brown body with paired yellow oblong spots; 2 pale, jagged thoracic stripes; each wing has dual zigzag bands, clear wing tips

similar species: **Common Whitetail** not found in Jalisco, has much less white in wings

habitat: desert springs, ponds, lakes

Jalisco flight season: months TBD

Hoary Skimmer (*Libellula nodisticta*)



photos: male and female **Rare in Jalisco** - please report all sightings

size: medium/large, length 46-52 mm, wingspan 76-82 mm

male: thorax and abdomen pruinose blue-gray; thorax of immature has 2 broken yellow stripes; wings have small dark area at base and at nodus, basal dark wing area becomes surrounded by white, black stigma; no other white on wings

female: dark gray/brown with row of yellow dashes along abdomen side; when mature can turn pruinose like male

similar species: **Twelve-spotted Skimmers** have dark wingtips; not found in Jalisco

habitat: springs; spring-fed streams

Jalisco flight season: TBD

Gray-waisted Skimmer (*Cannaphila insularis*)



photos: male, immature and mature females **RARE in Jalisco** - please report any sightings

size: medium, length 37-44 mm, wingspan 62-65 mm

male: wings narrower than in most Skimmers, lacking any color; abdomen dark with gray-blue pruinosity developing on S2-3; face is pale with dark eyes and top of frons

female: like immature male with brown and yellow coloration but with noticeable flange used for ovipositing; dark wingtips; can become all dark with gray pruinosity

habitat: marshy ponds, lakes and streams

Jalisco flight season: month 7-9 thus far

Note: original link to male on iNaturalist - <https://www.inaturalist.org/observations/6937121>

Part III—Spiketails (Cordulegasteridae)

—1 genera/species documented in Jalisco.

All Spiketails have long abdomens and yellow and black patterning.

=!= =!= =!= =!= =!=

Apache Spikletail (*Cordulegaster diadema*)



photos: male and a female ovipositing **RARE in Jalisco** - please report any sightings

size: very large, length 74-88mm, wingspan 89-109 mm

male: very dark appearance; narrowly separated tear-shaped aqua-blue eyes are yellow-green in juveniles; dark abdomen is banded rather than spotted with segments 6-8 moderately expanded, there is a thin half-ring between the bands

female: similar to male; long abdomen with a spike-like ovipositor

behavior: hang perches; copulation in trees can take 2 hours; females oviposit with downward vertical thrusts into sand at edge of waterway

habitat: small mountain streams with silt-bottom pools

Jalisco flight season: month 12 thus far

Part III—Clubtails (Gomphidae)

—19 species documented in Jalisco.

=====
=====

Quick Guide to the Clubtails—7 genera

All Clubtails have widely separated eyes, clear wings, and often a clubbed abdomen.

The males usually perch on rocks and sandbars.

Most are found on moving water.

The 3 most common genera:

Sanddragons

Progomphus

Medium-sized, thin abdomen without large "clubs", found on sandy or gravelly creeks and rivers



Leaftails

Phyllogomphoides

Large-sized, dark with long abdomens with leaf-like flanges near abdomen tip, often perch on vegetation



Ringtails

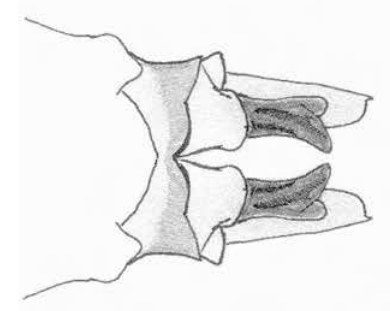
Erpetogomphus

Moderate-sized, green thorax, pale rings on abdominal segments; perch on rocks, sandbars



Note: Not all clubtail species' information or images available at this time.

Zebra-striped Sanddragon (*Progomphus clendoni*)



©Enrique González Soriano

photos: male and female; male appendages from below
size: medium/large, 46-52 mm

male: dark thorax sides have pale yellow stripes, top stripes form a disjointed "W"; abdomen S1-7 very narrow, expanded at tip, club of S8-10 black & preceded by thick yellow ring, pale yellow rings on middle abdomen segments; appendage tops smooth & yellow, lower appendages forked; blue-gray eyes, yellow face with dark markings

female: patterned like male; small top point on S1; appendages white; wings slightly yellowed

behavior: males perch on sandbars and rocks

habitat: moving water with sandy and rocky areas **Jalisco**

flight season: months 1-4,6-9,11,12 thus far



***Splendid Sanddragon (*Progomphus zonatus*)**



photos scan of dead male specimen and appendages

RARE - please report any sightings as they would be a state record

size: large, length ~62 mm

male: dark thorax with gray stripes top and sides, side stripes with mid-points widest and pointing away from each other; abdomen dark with thin rings S3-5, S1-7 very narrow, expanded at tip, club of S8-10 black & preceded by thick yellow ring,, appendages dark with pale tips

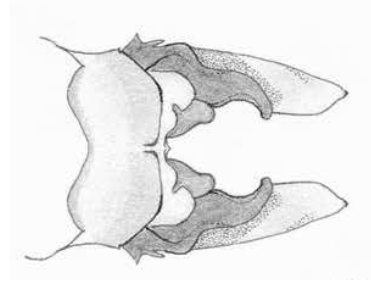
female: TBD

behavior: males perch on sandbars and rocks

habitat: moving water with sandy and rocky areas in higher elevations

Jalisco flight season: months ***NOT FOUND IN JALISCO YET BUT POSSIBLE**

Mexican Sanddragon (*Progomphus mexicanus*)



©Enrique González Soriano

@Dennis Paulson

photo: scan of male and drawing of appendages

size: medium, length ~51 mm

male: green on thorax and yellow on the abdomen; wings slightly amber-tinted; appendages only yellow at the extreme tip and unforked; middle thoracic stripe interrupted

female: TBD

behavior: males perch on sandbars and rocks

habitat: moving water with sandy and rocky areas

Jalisco flight season: months 1,6-8,11,12 thus far

"Yelapa" Sanddragon (*Progomphus cf. mexicanus*)



photos: males and appendages

size: medium, TBD mm

rare in Jalisco, please report all sightings

male: wings slightly amber-tinted; appendages only yellow at the extreme tip and unforked; middle thoracic side stripe interrupted

female: TBD

behavior: males perch on sandbars and rocks

habitat: moving water with sandy and rocky areas

Jalisco flight season: months 1,11,thus far

Note: this represents an undescribed species;
recorded twice in Yelapa in different years
by different individuals in town near the Yacht Club



Gray Sanddragon (*Progomphus borealis*)



photos: male and pair in mating wheel

RARE in Jalisco - please report any sightings

size: large, length 56 - 62 mm, wingspan 66 - 72 mm

male: yellow face; thorax sides have large gray patches; dull pale yellow triangles top of very thin black abdomen; costa yellow; upper appendages yellow, lowers dark, like the **Common Sanddragon**; both arch abdomen when perching

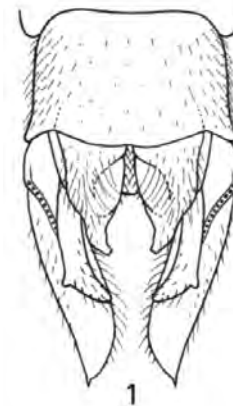
female: very similar to male but lacks club, abdomen more cylindrical

behavior: males perch on sandbars and rocks

habitat: sandy rivers, lakes

Jalisco flight season: months TBD

Belyshev's Sanddragon (*Progomphus belyshevi*)



© J. Belle - *Progomphus belyshevi*
 1. S10 & appendages underside
 2. top & side of thorax

photos: undescribed species, cf. *Progomphus belyshevi* - the assumption that **Belyshev's** would be similar; drawings of appendages and thorax

RARE in Jalisco, please report all sightings

size: large, length 55-56 mm, wingspan ~66

male: much like the **Gray Sanddragon** with dark and gray areas on the thorax sides, sides of the thorax darker with a smaller amount of gray, middle wide dark stripe, which is joined with the femoral stripe; appendages more narrow than in **Gray Sanddragon**

female: like male but slightly larger

habitat: assumed to be sandy rivers, lakes

Jalisco flight season: month 8 thus far

Broad-striped Forceptail (*Aphylla angustifolia*)



photos: mature male and immature male

size: large, length 62-68 mm, wingspread 74-82mm

male: 3 pale stripes on side of thorax with the middle stripe narrower; abdomen narrow with a flange on S8 (males and females)

female: very similar but abdomen more cylindrical, club narrower

habitat: lakes, ponds and pools of intermittent streams with muddy bottoms

Jalisco flight season: months 6,8,10 thus far

Narrow-striped Forceptail (*Aphylla protracta*)



photos: male and female

size: large, length 64-66 mm

male: flanged abdomen mostly russet-colored; thorax brown with narrow pale stripes; lower appendage unnoticeable; blue eyes

female: like male

habitat: lakes, ponds and pools of intermittent streams with muddy bottoms

Jalisco flight season: months 1,5,6,8,10 thus far



Angle-tipped Forceptail (*Phyllocycla elongata*)



photos: male and female

RARE in Jalisco - please report any sightings

size: large, length ~55 mm

male: 4 pale stripes on thorax sides; abdomen thin and black with all dark club & appendages,
each segment's ring twice size of preceding ring

female: abdomen more cylindrical, pale area reduced; no club, pale under S9&10

habitat: streams with deep pools

Jalisco flight season: months 8,9,10,11,12

Note: *Phyllocycla breviphylla* may be a synonym of *Phyllocycla elongata*.; female above labeled *P. breviphylla* on iNaturalist

Two-striped Leaftail (*Phyllogomphoides bifasciatus*)



32 *P. bifasciatus*

Plazi Treatment Bank



© Dennis Paulson

photos: male, appendages and female

size: large, length 57 mm

male: only two stripes on sides of thorax with no hint of any other markings; pale face with dark cross stripes, pale blue eyes; middle abdominal segments have rings open at top, S7/8 with broad complete ring, club widely flanged ("leaf-like"), appendages pale with dark edges

female: less colorful; abdomen more cylindrical; lacks club

habitat: small streams in semi-forested areas to larger streams and small rivers with pools

Jalisco flight season: months 9-11 thus far



© Dennis Paulson

West Mexican Leaftail (*Phyllogomphoides nayaritensis*)



photos: males and appendages

size: large, length 60-68 mm

male: dark thorax with mirror image "L" on top, slight yellowish cast to the 2 stripes on side, small middle stripe; pale face with dark cross stripes, pale blue eyes; middle abdominal segments have rings open at top, S7/8 with broad complete ring, club widely flanged ("leaf-like"), appendages pale with dark edges

female: like male but without the widened flanges;
the larva is unknown

habitat: rocky and muddy rivers with moderately swift current

Jalisco flight season: months 7,9,11,12 thus far

Pacific Leaftail (*Phyllogomphoides pacificus*)



photos: males

size: large/very large, length 65-67 mm

male: blue eyes widely separated; sprawling legs; well camouflaged; 5 parallel & entire bluish-white thoracic stripes; incomplete abdominal rings prior to S7

female: less colorful; abdomen more cylindrical

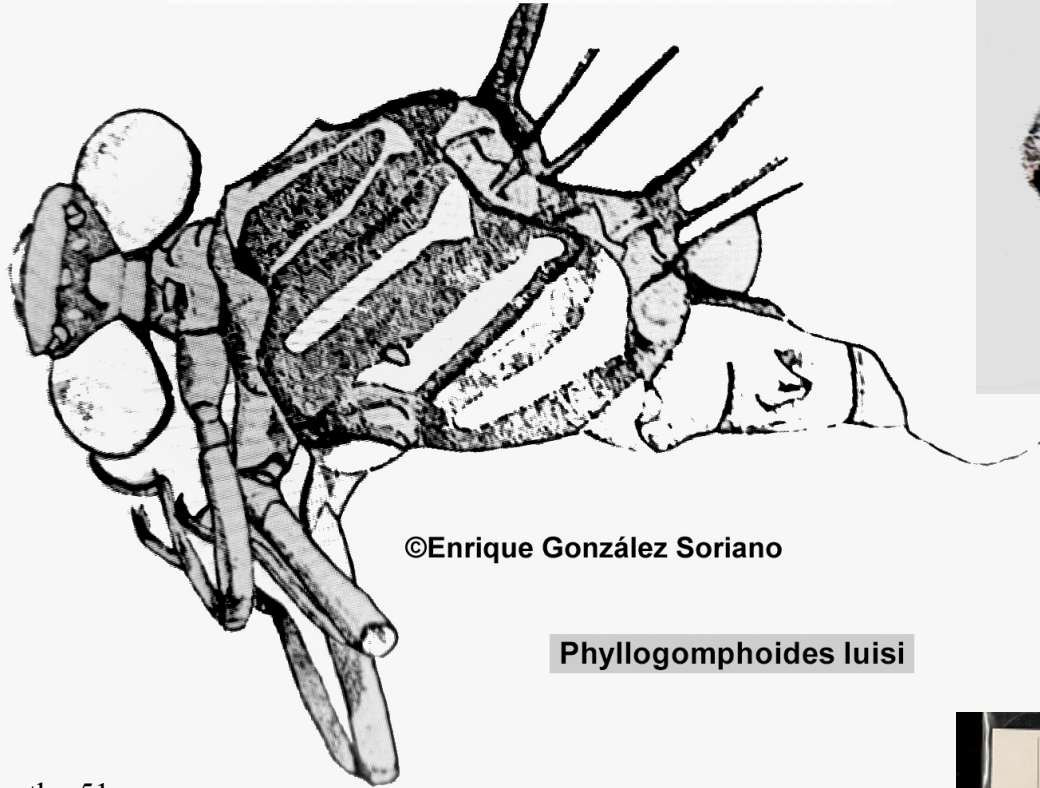
habitat: streams with deep pools

Jalisco flight season: months 6-12 thus far



Luis's Leaftail (*Phyllogomphoides luisi*)

Dos Nuevas Especies de Phyllogomphoides Belle 1970 (Odonata: Gomphidae)
del Estado de Morelos, Mexico



©Enrique González Soriano

Phyllogomphoides luisi

size: length ~51 mm

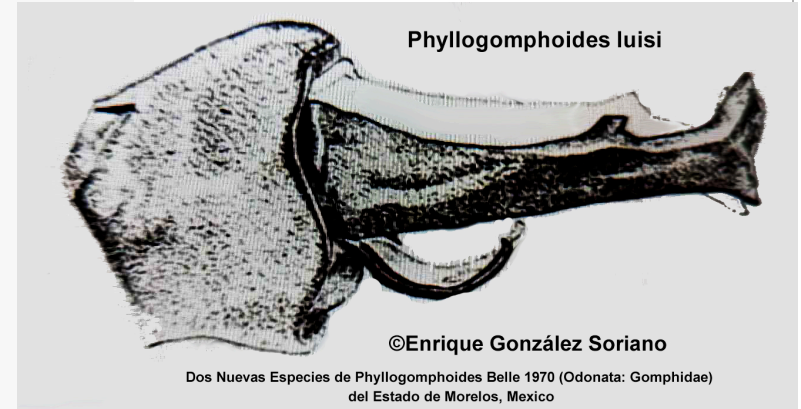
male: very similar to *P. pacificus*; thorax with 5 olive green stripes; abdominal segments 1 & 2 are yellow on top, 3-6 have pale bands, 2/3 of 7 is yellow, 8 has diffuse side spots, 9 & 10 are black; appendages are black

female: like male with the appendages being yellow with some dark at basal area

Jalisco flight season: months 8,9,10

Note: added to Jalisco species list 2024

habitat: TBD

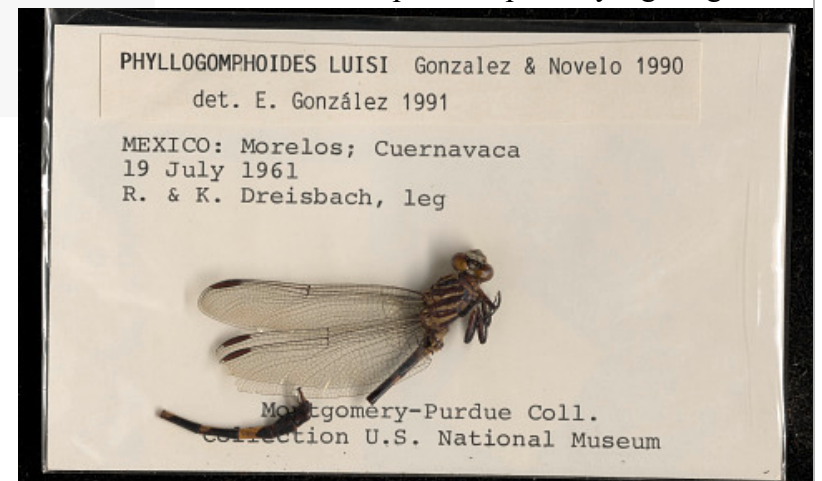


Phyllogomphoides luisi

©Enrique González Soriano

Dos Nuevas Especies de Phyllogomphoides Belle 1970 (Odonata: Gomphidae)
del Estado de Morelos, Mexico

photos: a dead specimen of
Phyllogomphoides luisi
and
drawings by
Enrique González Soriano
who described the species
RARE in Jalisco -
please report any sightings



Yellow-legged Ringtail (*Erpetogomphus crotalinus*)



photos: male and female

RARE in Jalisco - please report all sightings

size: medium, length 45-49 mm, wingspan 60-72 mm

male: yellow-green thorax lacks any dark striping;
abdomen yellow with indistinct black rings,
medium-sized club, yellow appendages;
wings with yellow costa on both sexes

female: like male but abdomen more cylindrical,
S1-2 mostly green, lacks club

behavior: males perch on rocks, sandbars and on branches
overhanging streams

habitat: moving water with riffles in the sunshine

Jalisco flight season: months 7,9,11 thus far



One-striped Ringtail (*Erpetogomphus bothrops*)



photos: male and female

size: medium, 38-47 mm

male: thorax green with one dark stripe; green face with blue eyes; tip of narrow ringed abdomen is expanded with some yellow on the underside

female: thorax like male's; abdomen more cylindrical, lacks club; shows rings at abdominal segments

behavior: males perch on rocks, sandbars and on branches overhanging streams

habitat: moving water

Jalisco flight season: months 9-12 thus far



Straight-tipped Ringtail (*Erpetogomphus elaps*)



photos: male and female

RARE in Jalisco - please report any sightings

size: medium, length 39-49 mm; wingspan 50-62 mm

male: green thorax, top thoracic stripe dark, wide and short; no true side stripe; abdomen mostly dark with pale rings on S4-6, S7 with wider pale area, the top of club dark; straight blunt appendages pale; lower appendages curved to meet straight upper appendages at midpoint

female: like male; abdomen more cylindrical, lacks club

behavior: males perch on rocks, sandbars and on branches overhanging streams

habitat: moving water

Jalisco flight season: months 7-11 thus far

Boa Ringtail (*Erpetogomphus boa*)



photos: male and scanned male (dead) with appendages enlarged

RARE in Jalisco - please report any sightings

size: medium, length 49-53 mm, wingspan ~70 mm

male: blue eyes; apple to blue-green thorax with wide black 'shoulder' stripe; abdomen dark with green arrow-like marks atop S1-5, S6 with a green ring, S-9 dark on top, S10 yellow; thick bristles on upper last half of the cerci is characteristic (need to have in-hand)

female: coloration as in male, but with pale areas on abdomen and legs more extensive

similar species: Plateau Ringtail's cerci lack the bristles

habitat: moving water

Jalisco flight season: month 7 thus far

Plateau Ringtail (*Erpetogomphus sipedon*)



photos: male and appendages, and females

RARE in Jalisco - please report any sightings

size: medium, length ~41 mm, wingspan ~66 mm

male: blue eyes, green thorax, slender dark abdomen with thin yellow rings; appendages yellow and lack bristles on upper half

female: abdomen more cylindrical, lacks club; eyes more gray

behavior: males perch on rocks, sandbars and on branches overhanging streams

habitat: moving water

Jalisco flight season: months 6,7 thus far

Aztec Clubtail (*Stylurus falcatus*)

Stylurus falcatus, new species, type male, Plate I (from A NEW SPECIES OF
STYLURUS FROM MEXICO (ODONATA : GOMPHINAE)
by Leanora K. Gloyd) 1944



FIG. 1. Abdominal appendages in view from above



FIG. 2 Abdominal appendages in view from below

FIG.3. Abdominal appendages and segments 7-10 in side view -->



FIG. 4. Ventral part of second abdominal segment (right side) in side view showing hamules and other structures

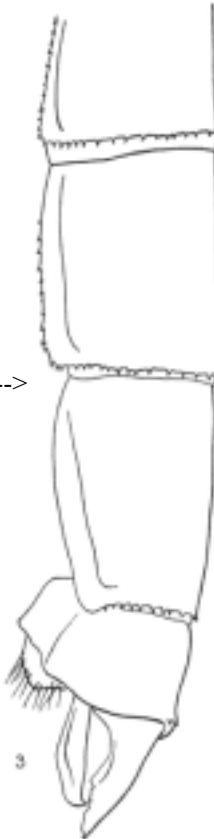


FIG. 5. Head, front view



FIG. 6. Color pattern of the top and side of the thorax

Photo of this species not available, below is a scan of this species



© Dennis Paulson

photos: none accessible, see male scan above **RARE in Jalisco**
- please report any sightings

size: medium, length more than 32 mm, wingspan ~60 mm

male: description at link below; (see Pl. I, Figs. 1-6 to the left;
very dark brown, almost black abdomen
with only a slight "club" on S8-9

<https://deepblue.lib.umich.edu/bitstream/handle/2027.42/56920/OP482.pdf;sequence=1>

female: patterned like the male

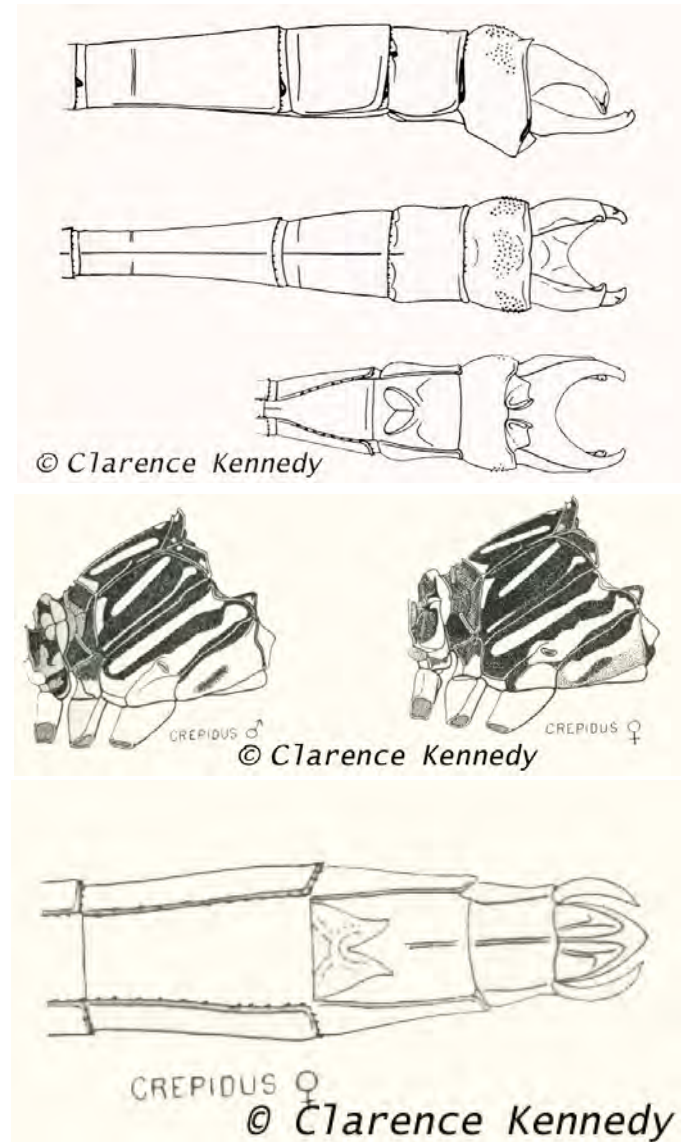
habitat: Lago de Chapala

Jalisco flight season: month 8 thus far

Tehuantepec Knobtail (*Epigomphus crepidus*)



- photo:** male & drawings of appendages and thorax of both sexes
RARE in Jalisco - please report any sightings
size: medium, length ~43-55 mm wingspread ~70 mm
male: knob-like appearance to "club" & appendages; dark-brownish with pale yellow or olive green stripes on the head and thorax; abdomen S1&2 olive, S3 1/3 black with top ridge yellow, S4-6 similar but with black on each, S7 2/3 yellow, S8-10 dark, appendages dark
female: similar to male but markings not as well defined and without knob at end of tail
habitat: lowland moist forests and rivers
Jalisco flight season: month 3



sketches by Clarence Kennedy from *Annals of the Entomological Society of America*, Volume 29, Issue 1, 1 March 1936, Pages 126–135, <https://doi.org/10.1093/aesa/29.1.126>

Part IV—Darners (Aeshnidae)

—17 species that have been documented in Jalisco.

==!==!==!==!==!==!

Quick Guide to the Darners—6 genera

Darners have eyes that touch broadly and patterned abdomens.
They seldom perch, but when they do they hang perch on vegetation.
The 3 most common:

Pilot & Malachite Darners

*Coryphaeschna &
Remartinia*

Long slender abdomens



Green Darners

Anax

Bulky, large broadly
touching eyes, solid green
thorax



Two-spined Darners

Gynacantha

Crepuscular, hang-perch in
deep shade during the
daylight. Females have
two spines on the
underside of S10



Common Green Darner (*Anax junius*)



photo: tandem pair with male-colored female ovipositing; non-male-like female

size: very large, 63-84 mm, wingspan 92-103 mm

male: more solidly colored than most other Darners; green eyes and yellow-green face, bull's eye mark top of face; solid green thorax; electric blue abdomen with wide dark stripe on top; wings can be clear or show yellowish tinge

female: most are purplish brown with green; rarer form colored like male; eyes remain brown with yellow back border; wings often yellowish tinged

behavior: tandem & solo ovipositing; abdomen carried straight in flight; swarms; migrates, often as immatures

habitat: ponds, fields and waterways

Jalisco flight season: months 3,6-12 thus far

Giant Darner (*Anax walsinghami*) **NEW 2022**



photo: male in flight and tandem pair **RARE in Jalisco** - please report any sightings

size: huge, male 99 - 111 mm, wingspan 115 - 135 mm

male: largest dragonfly in North America; coloring like **Common Green Darner** but very long thin blue and dark patterned abdomen; solid green thorax; eyes blue on top, yellow rimmed

female: like male; smaller but still very long narrow abdomen, 88 - 99 mm, wingspan 112 -122 mm; less blue

similar species: **Common Green Darner** carries abdomen straight in flight; eyes green

behavior: tandem & solo ovipositing; abdomen carried arched in flight

habitat: canyon and spring-fed streams, marshes, lakes in arid areas. In Jalisco, mating pair were found in November at first crossing of Rio de Tuito and at the Rio de Tuito waterfall

Jalisco flight season: months 11&12 th thus far

Amazon Darner (*Anax amazili*)



photo: male and female

size: very large, 70-75 mm, wingspan ~104 mm

male: bull's eye mark on top of frons, eyes brown-gray; solid green thorax, abdomen patterned with white spots, S1-2 pale green stripes, other segments appear patterned with wide, white spots

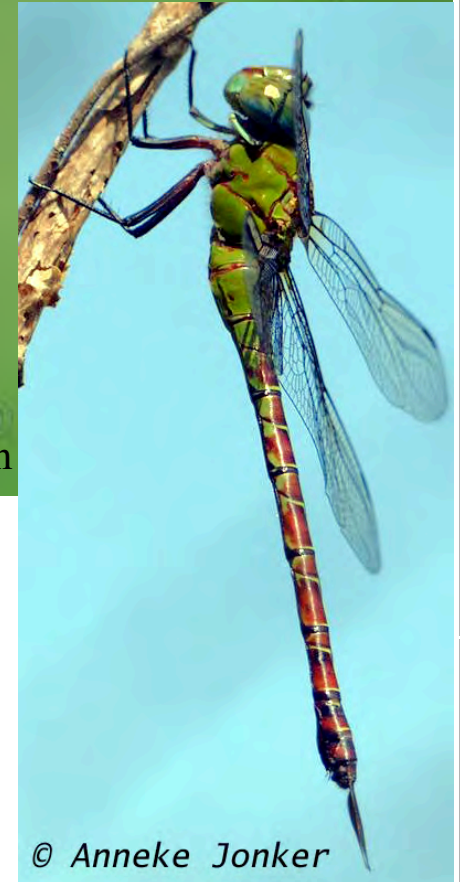
female: similar to male but lacks stripes on S2, otherwise more boldly patterned

behavior: males less often seen than females

habitat: overgrown weedy ponds

Jalisco flight season: months 6,7,9,10 thus far

Blue-faced Darner (*Coryphaeschna adnexa*)



photos: males and a female

size: large/very large length 66-69 mm, wingspan 88-108 mm

male: bright blue face and eyes; green thorax with thin dark stripe; dark brown abdomen with thin green rings; appendages lack spine

female: like male but with broader abdomen; wings can have an amber tint; eyes show blue; appendages tend to break off

habitat: ponds, usually covered with floating vegetation such as water lettuce, water hyacinth or duckweeds

Jalisco flight season: months 2,4,6,7,9-12 thus far

© Anneke Jonker

Mangrove Darner (*Coryphaeschna viriditas*)



photos: male and female

size: very large, length 76-85 mm, wingspan 102-120 mm

male: green face with black T-spot on frons; green thorax with narrow brown stripes; abdomen streaked with green and brown

female: like male but with broader abdomen

habitat: mangrove marshes

Jalisco flight season: months 1,6,10 thus far

Fiery Darner (*Coryphaeschna diapyra*)



photos: male and female

size: very large, length ~75 mm, wingspan ~100 mm

male: green thorax with reddish abdomen, long appendages

female: like male but with brown eyes; wings can turn brown with maturity

habitat: ponds and marshes

Jalisco flight season: months 7,8,11 thus far

Pale-green Darner (*Triacanthagyna septima*)



photos: male and female

RARE in Jalisco - please report any sightings

size: large, length 59-66 mm

male: pale green thorax, pale yellow legs; eyes bluish-green; thin brown abdomen with green rings; long appendages

female: very similar in coloration to male but has greenish-brown eyes; long, slender appendages; T-spot lacks a stem

behavior: hang from a twig or vine with abdomen almost vertical;
crepuscular feeders, roost within the jungle; come out to feed at jungle edge at dusk

habitat: breed in jungle rain pools

Jalisco flight season: months 5,6 thus far

Caribbean Darner (*Triacanthagyna caribbea*)



photos: male and female

RARE in Jalisco - please report any sightings

size: medium, length ~ 63 mm

male: green thorax striped with black; tip of abdomen pale green

female: very similar in coloration to male but with wider body

behavior: hang perch; crepuscular

habitat: tropical forests

Jalisco flight season: months 7,9 thus far

Malachite Darner (*Remartinia luteipennis*)



photos: male and pair in mating wheel

size: very large, 76-80 mm, wingspan 92-102 mm

male: wide green stripes sides and top of thorax, pale thoracic stripes wider than brown stripes; abdomen brown with S1-2 mostly green, thin green marks rest of abdomen

female: like male but eyes and face blue with very short appendages; wings become brown with maturity

behavior: males fly at waist to above head level, hovering now and then

habitat: ponds and streams with marshy edges

Jalisco flight season: months 4-11 thus far

Secretive Darner (*Remartinia secreta*)



© Tripp Davenport



© Veronik Moon

photos: males

size: very large, 78-80 mm, wingspan 92-100 mm

male: like Malachite Darner but with the brown stripes as wide as, or wider, than green stripes

female: unlike male almost unmarked pale yellow-green thorax; abdomen patterned with very short appendages; wings become brown with maturity

behavior: secretive

habitat: small pools in fern swamps; unlikely to be in the highlands

Jalisco flight season: months 7-10 thus far

Turquoise-tipped Darner (*Rhionaeschna psilus*)



behavior: abdomen carried straight in flight; swarms; migrates

habitat: ponds, ditches and sluggish streams

Jalisco flight season: months 1-4,8-12 thus far

photos: males

size: large, 56-61 mm

male: patterned slender dark abdomen; S9-10 blue on the underside, S10 has paired spots connected by a bar; wide sinuous green thoracic stripes; long slender appendages; inconspicuous bump under first segment

female: thorax similarly marked to male; inconspicuous bump under first segment; spots on abdomen are small and green colored, S10 has paired spots connected by a bar; long appendages



Black-tailed Darner (*Rhionaeschna jalapensis*) **NEW 2021**



photos: male

RARE in Jalisco - please report any sightings

size: large, 68 mm

male: fewer pale spots atop abdomen than other *Rhionaeschna*;
stripes on thorax thin; dark line across face, blue eyes;

appendages forked in side view;

inconspicuous bump under first segment

female: thorax similarly marked to male; inconspicuous bump under
first segment

behavior: females may submerge abdomen when ovipositing

habitat: small to medium ponds

Jalisco flight season: month 3 thus far

Blue-eyed Darner (*Rhionaeschna multicolor*)

© Alvaro Xicohtencatl Hernandez



Julio Álvarez

photos: male and female

size: large, 65-69 mm, wingspan 89-92 mm

male: bright blue eyes; pale line across face; blue stripes on front and sides of thorax, inconspicuous bump under first segment; abdomen mosaic patterned; appendages shaped like a wrench when seen from the side

female: thorax similarly marked to male; inconspicuous bump under first segment; colored as male or in greens and browns

behavior: abdomen carried straight in flight; swarms; migrates; hang perch

habitat: ponds, ditches and sluggish streams

Jalisco flight season: months 2,3,5-11 thus far

Ditzler's Darner (*Triacanthagyna ditzleri*)



© Robert D Stevenson

photos: male and female

RARE in Jalisco - please report any sightings

size: relatively small, length ~59 mm

male: dark brown thorax with green stripes on side wider than the brown background, middle of 3 stripes narrower, stripes atop thorax;
dark brown abdomen with small pale green markings; long appendages

female: very similar in coloration to male; 3 prominent spines under S10;
long appendages

behavior: hang perch; crepuscular

habitat: tropical forests

Jalisco flight season: month 8 thus far



© Terry Carr

Bar-sided Darner (*Gynacantha mexicana*)



© Juan Pablo Gonzalez

photos: male and female
RARE in Jalisco - please report sightings
size: large, length 70-76 mm,
wingspan 92-102 mm



male: mostly brown with pale green markings; brown or green eyes; thorax green with a dark green stripe at back end; usually with a dark brown stripe in the wings

female: very similar in coloration to male; appendages longer than S9&10

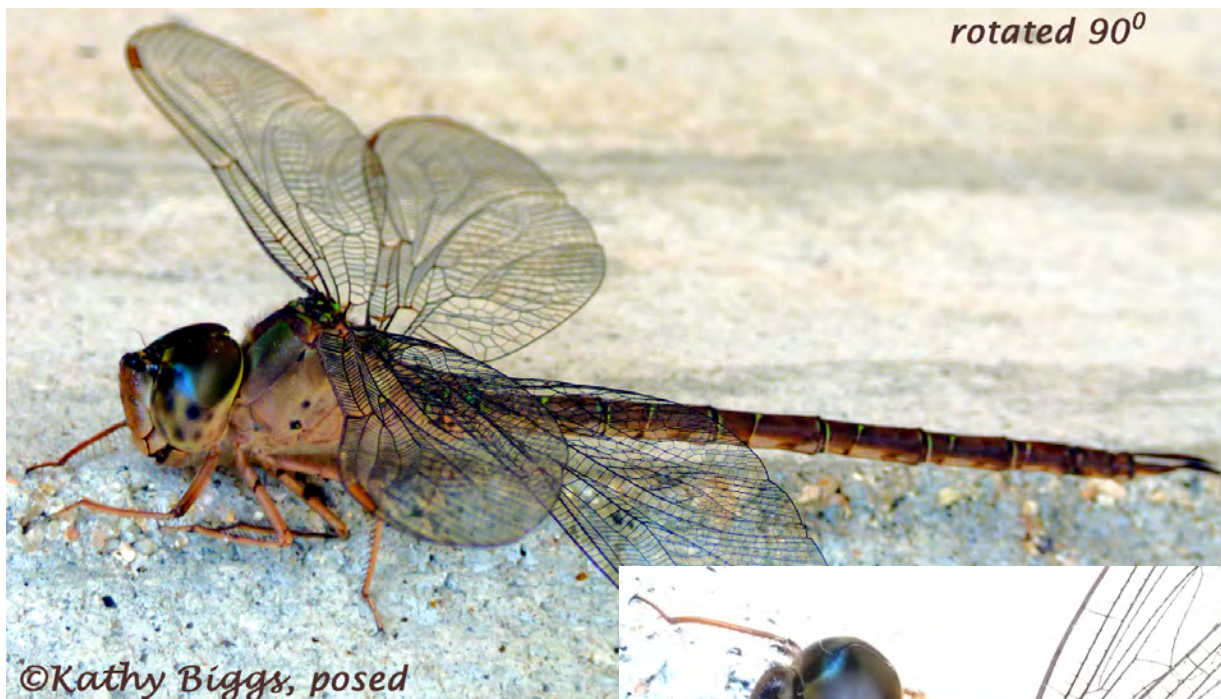
similar species: **Twilight Darner** appendage more than half the length of the uppers

behavior: crepuscular (sunrise and sunset)

habitat: ephemeral pools and ponds

Jalisco flight season: months TBD

Twilight Darner (*Gynacantha nervosa*)



photos: male (posed) and female (in-hand)

size: very large, 75-81 mm

male: tan thorax with 2 dark dots on sides;
slender abdomen with thin light green rings

female: similar to male but with two spines on
underside of abdomen S10; T-spot has spine

similar species: **Bar-sided Darner** has lower
appendage less than half length of the uppers

behavior: swarm at twilight (corpuscular),
does not fly during the daytime;
eggs laid in tree holes

habitat: ponds, ditches and sluggish streams

Jalisco flight season: months 1-3,5,6,9-11
thus far



Helen's Darner (*Gynacantha helenga*)



photo: males (mature and immature)

RARE in Jalisco - please report any sightings

size: relatively small, length TBD

male: bright yellow appendages and tip of S10; abdomen is brown with yellow-green markings that grow smaller on each segment,

S1-2 have blue on them;

thorax green with brown stripes

female: like male; pale stigma

behavior: crepuscular, perch by hanging from a twig, vine or leaf

habitat: forest clearings

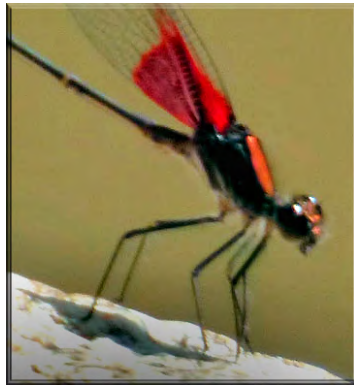
Jalisco flight season: months 4,6-11

SUBORDER II: DAMSELFLIES (ZYGOPTERA)

Damselflies have widely separated eyes and long thin bodies.
Most hold their wings closed above or alongside the abdomen.

5 of Mexico's 8 families of damselflies have been recorded in Jalisco
(several families have recently been merged into Pond/Narrow-winged Damsels)

V. Jewelwings



Jewelwings
(Calopterygidae)

- 1 genus in Jalisco

All have red at the base of their wings and long legs

VI. Pond Damsels



Pond Damsels
(Coenagrionidae)

- 12 genera in Jalisco

Very common, variable and colorful; wings are held closed, above the abdomen

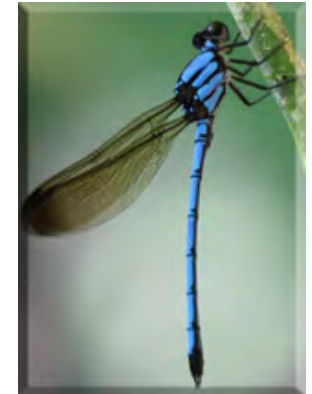
VII. Spreadwings VIII. Other families



Spreadwings
(Lestidae)

- 2 genera in Jalisco

They perch with their wings spread delta-like to their sides; blue eyes



Other Families:
Shadowdamsels
(Platystictidae)

- 1 genus in Jalisco

Bannerwings
(Polythoridae)

- 1 genus in Jalisco

Part V: Jewelwings (Calopterygidae)

—7 species have been documented in Jalisco.

=====
=====

Only one genus has been recorded in Jalisco/Mexico

All the males and some of the females in this genus have red in the basal area of their wings, some have additional coloration at the wing-tip



American Rubyspot (*Hetaerina americana*)



photos: male and female

size: medium/large, length 40-51 mm

male: 1/3 to 1/2 basal area of wings ruby red, tips mostly clear; thorax top blood red, pale side stripes; abdomen bronze-brown-green with thin rings; pale stigma on wing (occasionally missing); tan on underside of abdomen

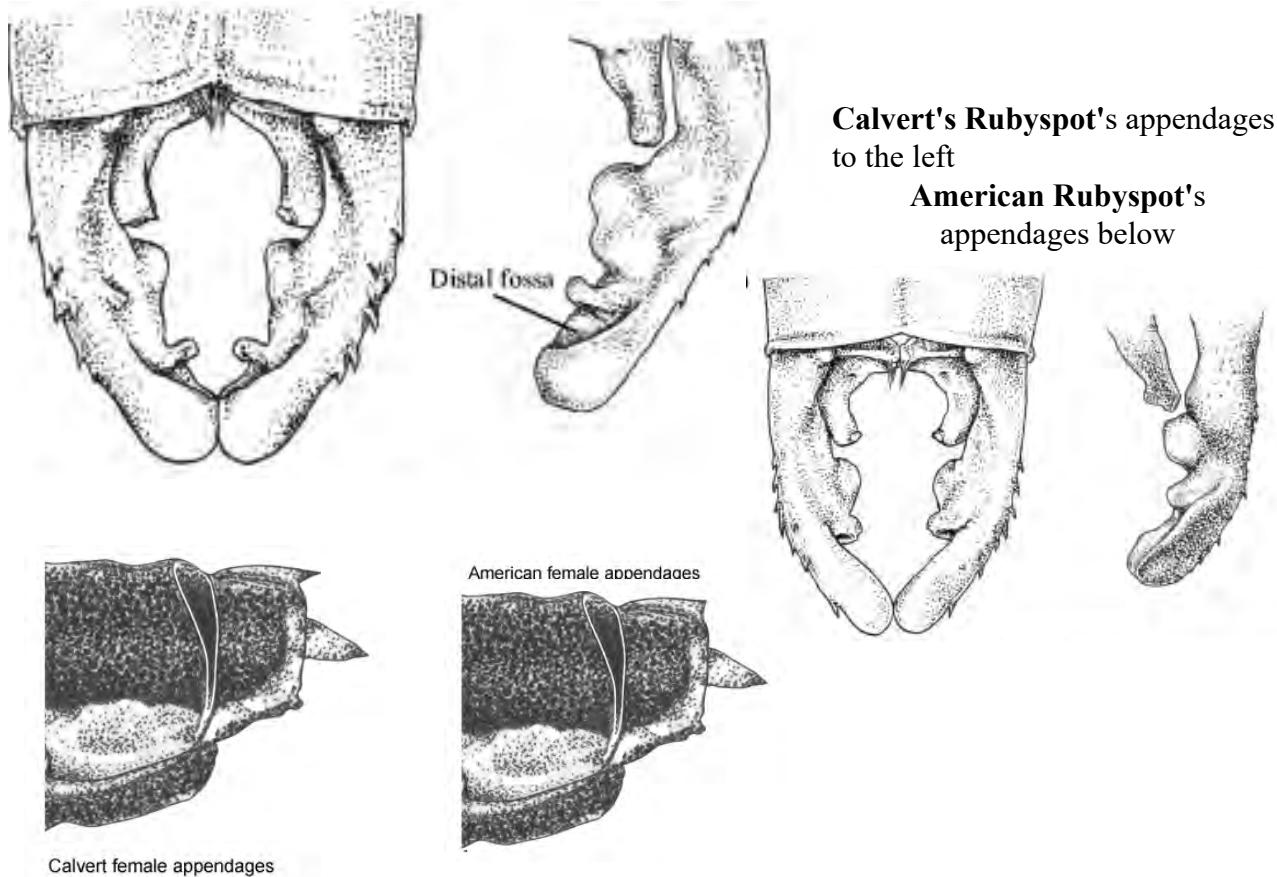
female: less colorful; wings usually with orange streak on leading edge, tips mostly clear, pale stigma (sometimes missing), beige stripes down sides of each abdominal segment

behavior: males hold territory at moving water; perch with head lower than abdomen, wings held together above or to one side of abdomen

habitat: open streams, rivers

Jalisco flight season: flies all year

Calvert's Rubyspot (*Hetaerina calverti*)



This species was recently split from the American Rubyspot (2020)

photos: drawing of appendages & of American Rubyspot's appendages from Type description; photo of male

size: medium/large, length 40-46 mm

male: this species just recently split from the **American Rubyspot**;
VERY similar; differentiate by appendages and habitat

female: very difficult to distinguish from **American Rubyspot** female without a microscope

behavior: males hold territory at moving water; perch with head lower than abdomen, wings held together above or to one side of abdomen

habitat: open streams, rivers in drier habitat than Am.

Jalisco flight season: month 1,3-6,8-10 thus far

Canyon Rubyspot (*Hetaerina vulnerata*)



photos: males and female

size: medium, length 40 - 49 mm

male: red at wing base usually less extensive than American Rubyspot's; smoky edge/wing-tip; no stigma; compare by appendages - American's upper appendages have 1-2 toothlike lobes inside at midpoint while Canyon's lack these lobes

female: less red; thorax top metallic green; wing patches orangish, no stigma, smoky wing tips

behavior: males hold a territory at moving water sites; usually don't hold wings together to one side of abdomen like **American Rubyspot**

habitat: canopied streams, rivers

Jalisco flight season: months 2-4,7,10-12 thus far

Smoky Rubyspot (*Hetaerina titia*)



photos: male and appendages (from side) and female

size: medium/large, length 40 - 51 mm

male: quite variable; in Jalisco, there is very little dark beyond the basal red in the wings but the wing tips are smoky; chestnut-colored thorax; abdomen mostly black; lower appendages curve upward

female: four green spots on the top of the chestnut-colored thorax are diagnostic; pale stigma

behavior: males hold territory at moving water sites; usually perch horizontally

habitat: sandy-bottomed streams, rivers

Jalisco flight season: months 1-3,5-12 thus far

Highland Rubyspot (*Hetaerina cruentata*)



© Laura Gaudette

© Andres Herbabdez

photos: males (close-up & appendages) and female

size: medium/large length 41- 48 mm

male: like other Rubyspots, has red at base of wing with a dark tip,

no stigma; the bright green triangle on the side of the thorax is diagnostic

female: less colorful; wings without red, only amber wash and not dark at tip; green triangle and stripe on thorax side and top

habitat: not found at lower elevations

Jalisco flight season: months 1,3,4,8,9,11 thus far



© Jaguar Gozando Selva

Racket-tipped Rubyspot (*Hetaerina occisa*)



photos: male & appendages (from below) and female

size: medium, length 35-48 mm

male: ruby red color at base of wings with a distinct jewel-like red colored spot at tip of wings; S1-3 usually red on top; long, racket-shaped lower appendages

female: lacks jewel-like spot at wing-tips; top of thorax with green sheen; wings slightly smoky; prothorax (neck-like area) has sideways projections, lacking in female **Smoky Rubyspots**

behavior: males hold territory at moving water sites; sometimes perch with head lower than abdomen & wings held together above or to one side of the abdomen

habitat: open clear streams, rivers

Jalisco flight season: flies all year

Bronze Rubyspot (*Hetaerina capitalis*)



photos: males

RARE in Jalisco - please report all sightings

size: large, length 45-50 mm

male: wings with stigma present, basal red hindwing patch shortened, indistinct red-brown tip of wing; lower appendages very short; brown thorax with thin pale stripes; large nose-like structure that lies between the eyes is metallic blue-green

female: stigma present; metallic markings green; side stripe reaches thorax end; large nose-like structure that lies between the eyes is metallic green.

behavior: males hold territory at moving water sites; often perch with head lower than abdomen

habitat: wooded small clear streams

Jalisco flight season: months 6,9,11 thus far



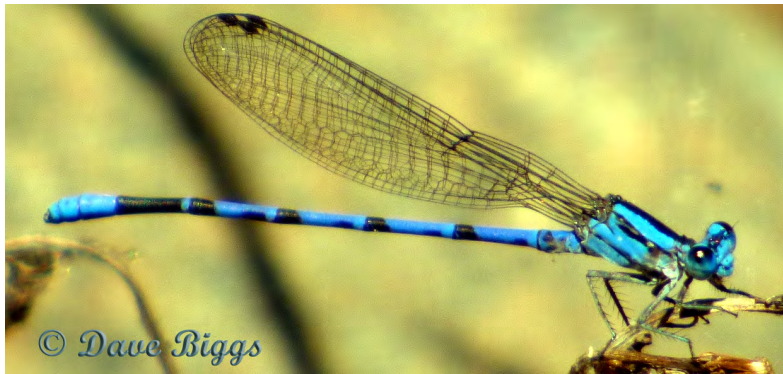
Part VI: Pond Damsels (Coenagrionidae) - 45 species documented in Jalisco

==!==!==!==!==!

Quick Guide to the Pond Damsels—12 genera —the 5 most common:

Dancers —*Argia*

Most are blue and black, some purple/red
Hold their wings together sail-like over the
body; at moving water—25 species



Bluets —*Enallagma*

Blue and black; hold their wings alongside their
abdomen when at rest;
on still waters—4 species



Threadtails — *Neoneura/Protonera*

Firetails —*Telebasis*

Abdomens all red—3 species



Forktails —*Ischnura*

Small and black with blue/green on head
and tails—5 species



Extremely
thin long
abdomens;
red/orange
— 3
species

Painted Damsel (*Hesperagrion heterodoxum*)



photos: male, young female, mature female

size: small/medium, length 27-35 mm

male: red eye spots; red top S8-10; yellow under S1-7; thorax top with 4 blue marks, sides blue, yellow brown in immature; coloration variable by age - immature all orange (above right)

female: only top of S7 blue; thorax top with blue triangles; coloration quite variable with age

habitat: creeks and streams

Jalisco flight season: months 3-5,9,10 thus far

Big Red Dancer (*Argia funcki*)



photos: male and pair and female showing 2 female color forms



size: VERY large for a damselfly, 47-54 mm; Mexico's largest *Argia*

male: bright red where most Dancers are blue; thorax has 2 parallel wide butt unforked side stripes; abdomen tipped in red with reddish rings; stigma red in center

female: several color forms, can be like male, blue or brown; stigma shows reddish color

behavior: perch high above the water on trees, boulders and cliff faces; become more active as the day warms up

habitat: fast moving, mid-elevation stream and rivers

Jalisco flight season: months 1,5-8 thus far

Fiery-eyed Dancer (*Argia oenea*)



photos: male and tandem ovipositing pair

size: small/medium, length 33-39 mm

male: upper & front of eyes bright red; coppery orange face;
top of thorax dark metallic coppery red; abdomen S3-6 blue/purple
above with S8-10 all blue; wings clear

female: eye color more muted if showing any red at all;
tan/brown coloration; top of thorax without red;
deeply forked side thoracic marks

behavior: Dancers hold their wings closed, above the body when
perched, often clapping them together;
females may oviposit completely submerged

habitat: shallow rocky streams and rivers

Jalisco flight season: flies all year



Amethyst Dancer (*Argia pallens*)



photos: males and dark form female (bottom)

size: medium/small, length 32-35 mm

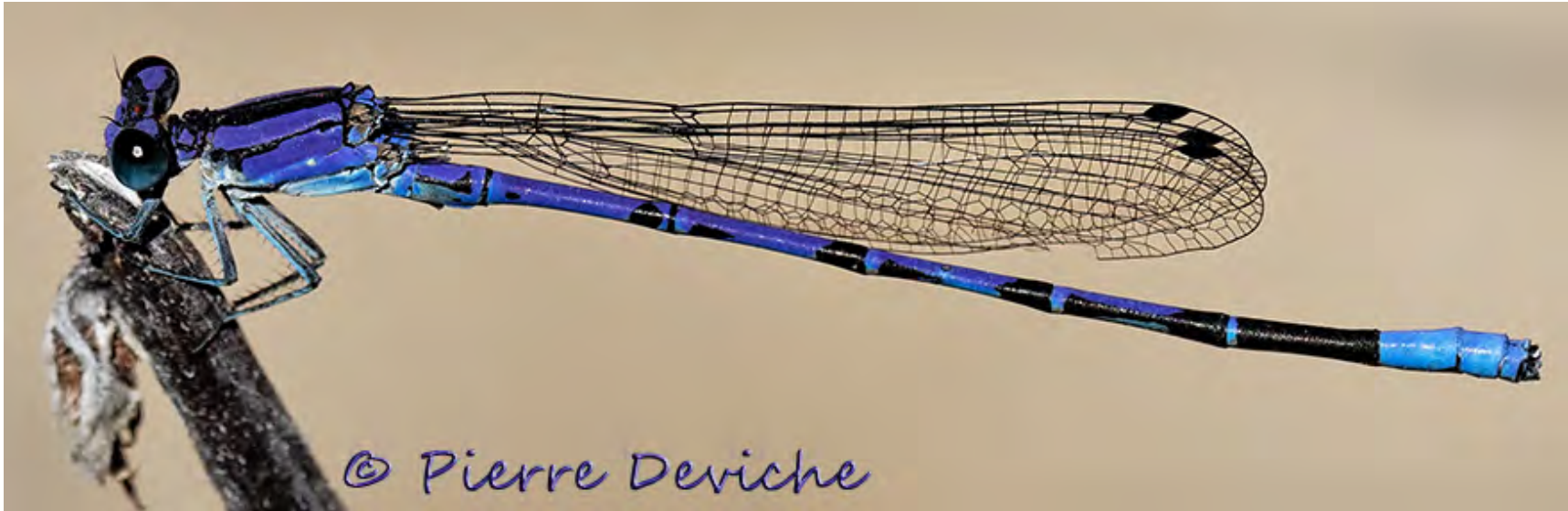
male: almost all violet /rose & very pale, even eyes, legs & tops of S8-10; top thoracic stripe thin & narrow, dark side stripe very thin and pinched at middle; prothorax ("neck") violet; pale stigma; no triangles down side of abdomen; S7 pale, not black

female: dark tan to rose

habitat: small streams at low altitudes

Jalisco flight season: months 2-4,6,-9,11,12 thus far

Springwater Dancer (*Argia funebris*), formerly *A. plana*



photos: male and female

size: small/medium, length 33-40 mm

male: purple coloration; the top stripe is shaped like a coffin; unforked pinched side stripes; S4 and 5 each have a small triangle that points rearward, S7-10 unmarked pale blue

female: like male or pale browns

habitat: canopied streams, seeps

Jalisco flight season: flies all year

Spine-tipped Dancer (*Argia extranea*)



photos: male and tandem ovipositing pairs

size: small, length 32-37 mm

male: blue-colored or light purple with wide, parallel-sided top thoracic stripe, stair-stepped side stripe; saddle-shaped spot side of S2, S3-6 each with an isolated triangle that points backwards, S7 has blue/purple atop ~50%, S8-10 blue with thick black line along the bottom edge

female: marked like male but less colorful; darker face; 2 forms, one blue & one tan

behavior: Dancers hold their wings closed, above the body, often clapping them together

habitat: small rocky &/or sandy streams, usually with a lot of emergent vegetation

Jalisco flight season: flies all year

Variable Dancer (*Argia fumipennis*)



photos: male and female **RARE in Jalisco** - please report all sightings

size: small, length 24-29 mm

male: violet when mature; thoracic shoulder stripe forked; top stripe wide & straight; lower half of thorax without contrasting white; "tail" is violet with black under S8-10; sometimes slightly smoky wings

female: like male but light brown or tan with wide black stripe on abdomen side

behavior: prefers slow moving areas of streams

habitat: slow streams, ponds

Jalisco flight season: months 4,5,7-10 thus far

Cerulean Dancer (*Argia anceps*)



© Dave Biggs

photos: male and female

size: medium length 37-41 mm

male: bright sky blue species with very little

black; wings can be amber-tinted; large eyespots; ALL the abdominal segments are blue on the top; side stripe pinched but not forked; S2 has short dark stripe on the side; appendages black

female: like male or tan; narrow line atop thorax; simple abdomen segments with a single small mark at the rear of each; amber-tinted wings

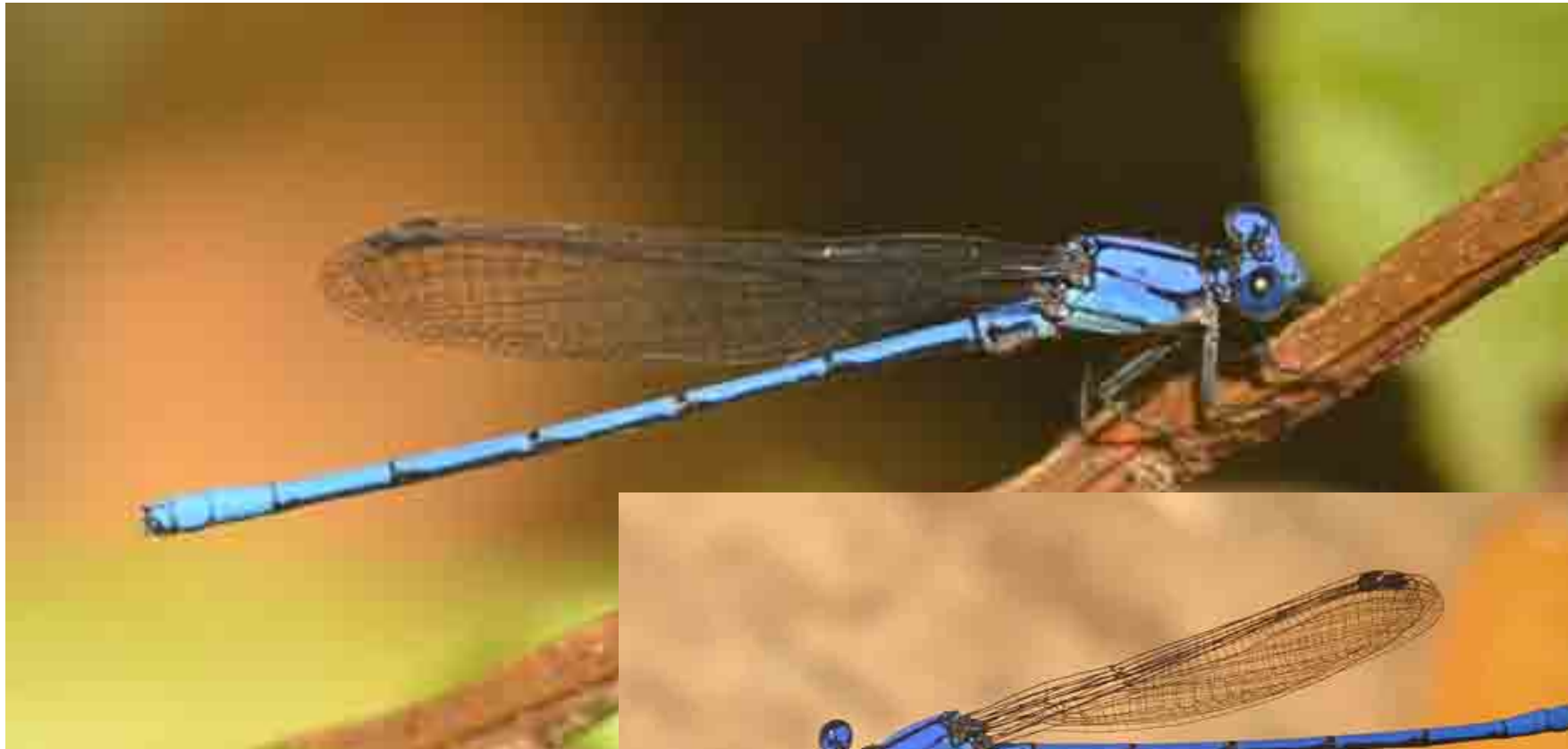
habitat: small rocky streams

Jalisco flight season: flies all year



Julio Álvarez

Celestial Dancer (*Argia variabilis*)



photos: males & female drawing **RARE in Jalisco**

size: medium, length 33.6-35.7 mm

male: bright sky blue species with very little black;
ALL the abdominal segments are blue on the top;
side stripe pinched but not forked; top stripe is
narrow; S2 has short dark stripe on the side;
appendages black

female: blue coloration is duller, shows triangles alongside abdomen

similar species: **Cerulean Dancer** has wider top stripe;

Sierra Madre Dancer shows black between S7&8 and top stripe is wider

habitat: forested areas at waterfalls

Jalisco flight season: months 7,11 thus far



A. variabilis

© Rosser Garrison

Sierra Madre Dancer (*Argia lacrimans*)



© Pierre Deviche



© Troy Hibblitts



© Jim Burns

photos: males and female

size: medium, length 37-46 mm

male: blue and black species with clear wings; large eyespots; thorax side stripe can be pinched or forked; abdominal S3 & 4 have incomplete bands versus S5&6 which have complete bands, S8-10 blue;
seen from above, the front 75% of S7 is blue; pale appendages

female: like male or pale browns; bold paired spots on S8,9; the bold pattern on S3-6 swells ventrally at the rear S8 & 9 blue

habitat: small rocky streams in wooded areas

Jalisco flight season: months 3-11 thus far

Harkness's Dancer (*Argia harknessi*)



photos: male and ovipositing females

size: medium, length 39-44 mm

male: bright blue with unforked side stripe; abdomen with S7 black, S3-6 with blue points pointing towards "tail",
S8-10 blue with dark lower edges

female: patterned like male but points replaced by streaks

habitat: rivers

Jalisco flight season: months 1-9,11,12 thus far

Apache Dancer (*Argia munda*)



photos: males and female (in tandem)

RARE in Jalisco - please report all sightings

size: medium, length 36-40 mm

male: thin top and unforked side thoracic stripes, conspicuous pale line low on side of thorax gives it a bi-colored look

female: like male or pale browns

habitat: canyon streams, even intermittent

Jalisco flight season: months 3?,5,9,11? thus far

Aztec Dancer (*Argia nahuana*)



photos: male and female

size: small length 25-35 mm

male: bright sky-blue; thorax shoulder stripe variably forked (lower stripe can be interrupted; blue "tail" S8-10; distance between lower appendages from above less than width of individual appendages; usually a spot, rather than a dash, on S2 side

female: less colorful, thicker bodied than male; one form like male; other is tan and black

behavior: Dancers hold their wings closed, above the body when perched, often clapping them together

habitat: slow waters

Jalisco flight season: months 4-7,9 thus far

***Anna's Dancer (*=proposed name) (*Argia annae*)**

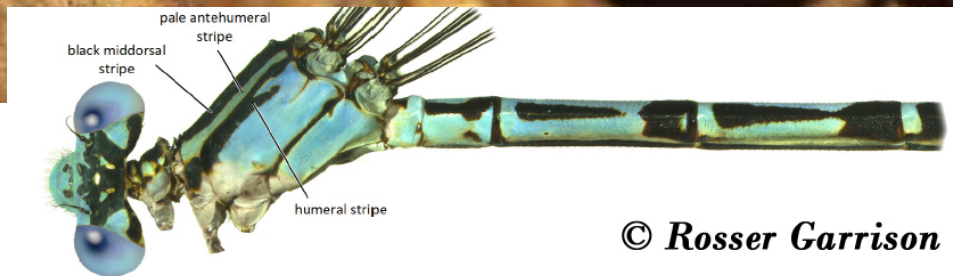


photo: male and female drawing **RARE in Jalisco** - please report all sightings

size: medium, length 38-39 mm

male: bright blue-colored; large blue postocular eye spots triangular in shape and not connected by an occipital bar; black thoracic side stripe forked; blue atop all abdominal segments with S2 having an irregular triangular black spot,

S4-7 with side spots, S7 mostly blue. no black stripe under S8-9; wings clear

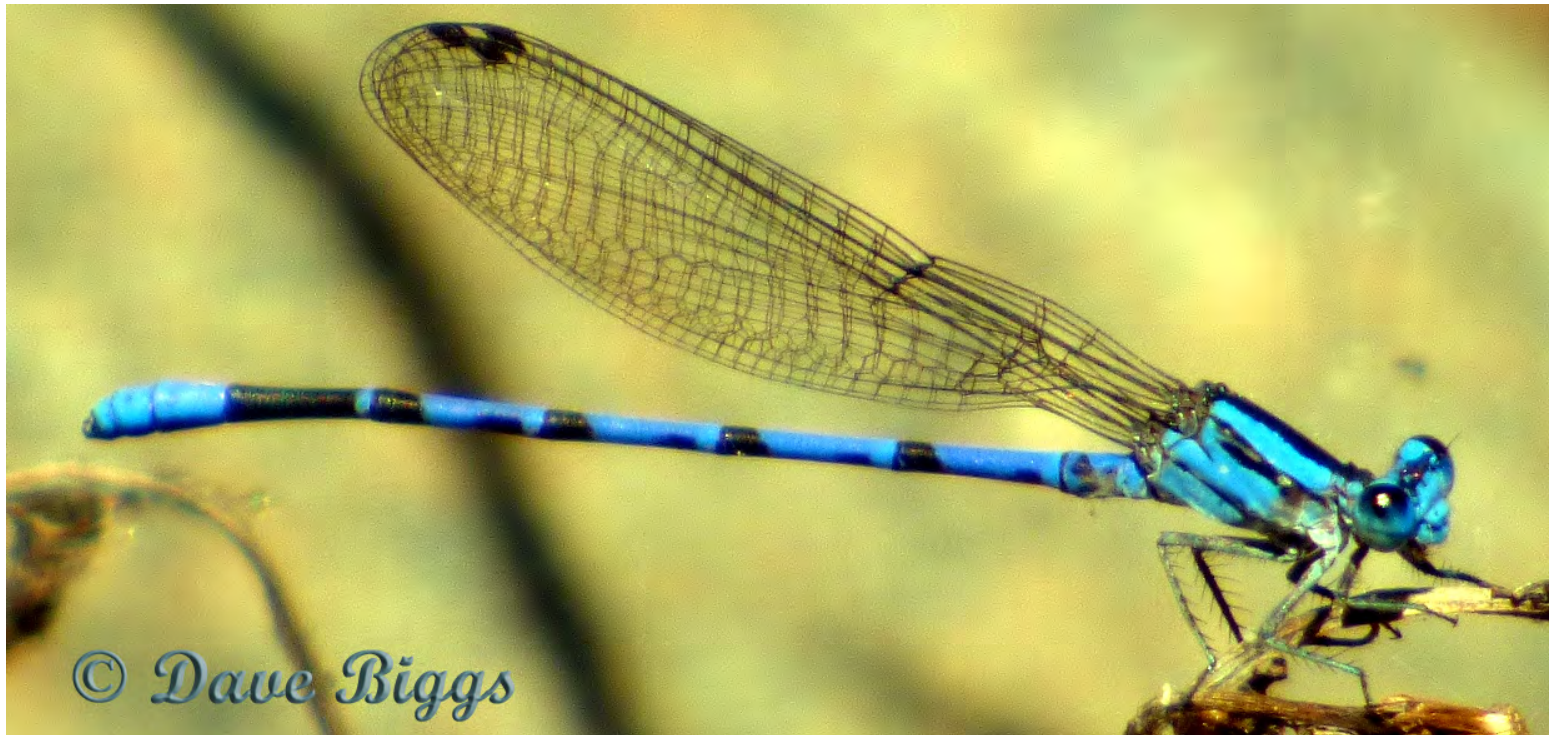
female: similar to male but pale colors a lighter blue; head with more extensive black

behavior: Dancers hold their wings closed, above the body, often clapping them together

habitat: roadside seepages at elevations from about 40 to 1830 m.

Jalisco flight season: month 9 thus far

Yaqui Dancer (*Argia carlcooki*) VULNERABLE SPECIES (G2G4)



photos: male and female

size: small, length 30-33 mm

male: blue-colored with thickly-forked side thoracic stripe;
S3-6 have long dark triangles along side, S8-10 blue on top
and sides and black underneath, S7 all dark

female: more strongly marked than male

behavior: Dancers hold their wings closed, above the body,
often clapping them together

habitat: lushly vegetated streams

Jalisco flight season: flies all year



Tarascan Dancer (*Argia tarascana*)



photos: male and 2 females

size: medium, length 34-39 mm

RARE in Jalisco - please report any sightings

male: blue and black species with wide, variably forked side stripe, top split forms a backwards pointing arrow; large eyespots; abdominal S3-6 each have a black band covering less than 1/3 of the segment, S8-10 blue

female: like male or pale browns

habitat: streams, ditches

behavior: Dancers hold their wings closed, above the body when perched, often clapping them together

Jalisco flight season: months 6?,7-9,11,12 thus far

Sabino Dancer (*Argia sabino*)



photos: male and female **RARE in Jalisco** - please report any sightings

size: medium, length 36-39 mm

male: blue/indigo coloration; side stripe wide and forked with an "island" of color at end; S3-5 have a complete black band at the rear that covers about 1/3 of the segment; S6 is 50/50 black & blue, S7 all black on top

female: similar to male but tan and light blue or tan and dark with ringed abdomen

behavior: Dancers hold their wings closed, above the body when perched, often clapping them together

habitat: pools near waterfalls; streams with large boulders

Jalisco flight season: month 8 thus far



Oculate Dancer (*Argia oculata*)



photos: male, tandem pair,
male-like female

size: small/medium, 33-39

male: abdomen mostly dark with backwards pointing blue arrows atop the segments nearest the thorax; side thoracic stripe wide and forked; "tail" black on underside with blue on top of S8-10

female: thorax like male, but abdomens with rings, not points. Blue and tan forms

behavior: Dancers hold their wings closed, above the body, often clapping them

habitat: ponds; slow moving water

Jalisco flight season: flies all year

Note: formerly called the Blue-point Dancer

Ulmec Dancer (*Argia ulmeca*)



photos: males and female in tandem **RARE in Jalisco** - please report any sightings

size: large, length 40-46 mm

male: blue-colored with thickly-forked side thoracic stripe, wide top stripe; abdomen black with thin blue ring at each segment break, unique dark mark on S8; wings can show tinting

female: a little smaller, tan where male is blue and with pale side streaks on abdomen

similar species: **Oculate Dancer** has blue points on S3-5; **Purple Dancer** has eye spots connected by a bar

behavior: Dancers hold their wings closed, above the body, often clapping them together

habitat: mid-elevation rocky streams in pine/oak forest

Jalisco flight season: month 7 thus far

Tezpi Dancer (*Argia tezpi*)



photos: male, blue female and tandem pair

size: small/medium, length 36-42 mm

male: very dark, even the face and eyes, eye-spots not very noticeable; thorax top all dark, sides two-toned; wings usually golden; all dark abdomen including S7-10 with 4 pale rings around segments

female: blue or brown; split thoracic side stripe

behavior: Dancers hold their wings closed, above the body when perched, often clapping them together

habitat: ponds & slow moving water

Jalisco flight season: flies all year

Dusky Dancer (*Argia translata*)



photos: male and female

RARE in Jalisco - please report any sightings

size: medium, length 35-41 mm

male: very dark with pale rings and no blue on the 'tail';
purplish tint to the body and luscious eyes;
side stripe doubled and joined at the base;
some cream color low on S8-10

female: like male or light tan; lack the luscious eyes

behavior: Dancers hold their wings closed, above the body
when perched, often clapping them together

habitat: rivers

Jalisco flight season: months 6,8 thus far



Powdered Dancer (*Argia moesta*)



photos: male and both color forms of females **RARE in Jalisco** - please report all sightings

size: medium, length 37-43 mm

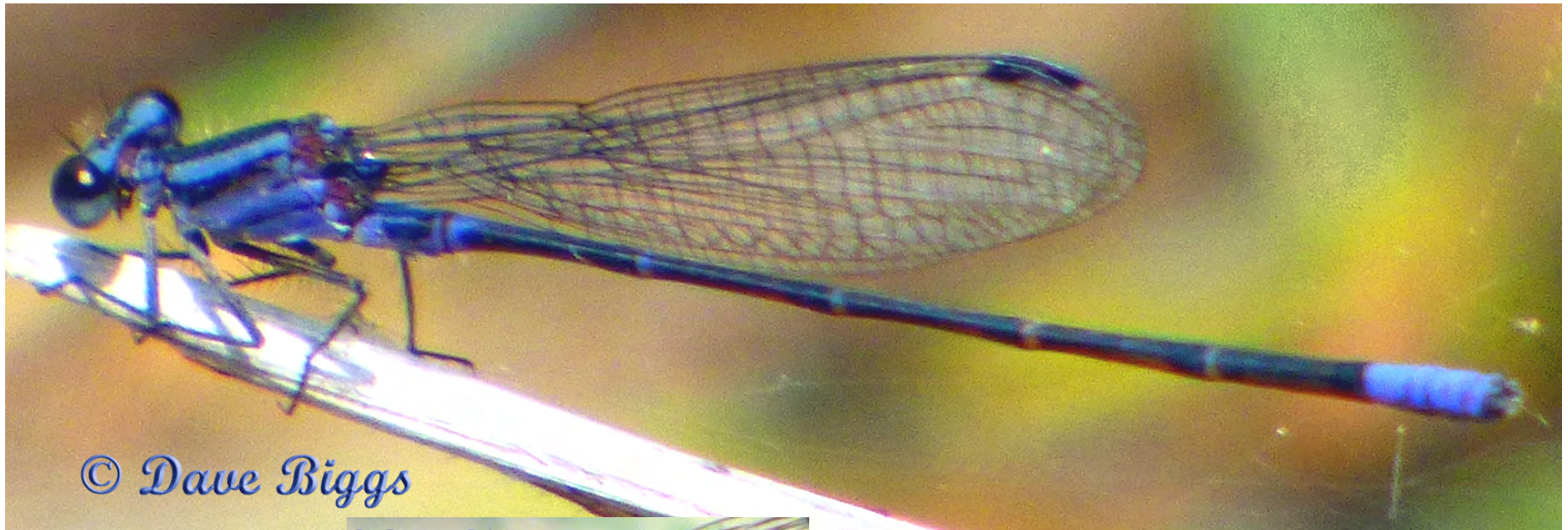
male: large for a damselfly; develops chalky/powdery white/gray pruinosity with age, especially thorax; abdomen turns pruinose gray on S8-10

female: pale blue or light brown thorax; older females sometimes become a bit pruinose

habitat: rocky rivers, windy lakes

Jalisco flight season: month 8 thus far

Purple Dancer (*Argia pulla*)



photos: males and females

size: small/medium, 23-35 mm

male: purple ground color; dark abdomen with thin pale rings and purple tip; thorax with wide side stripe; dark blue eyes have connected purple eye-spots —

some males & females seem to have a thinner side stripe

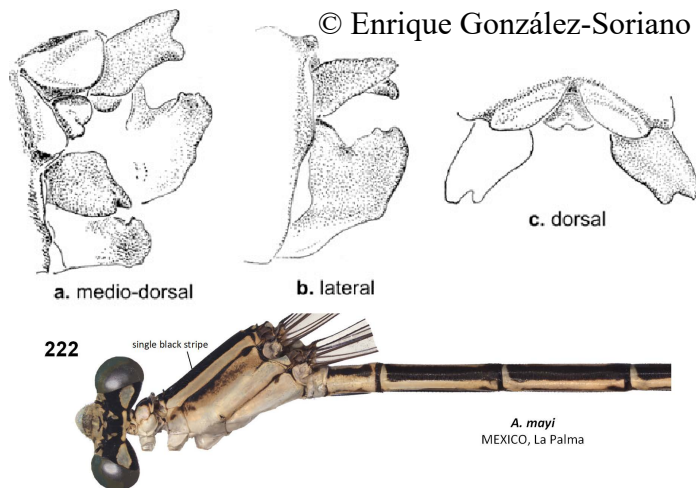
female: brownish purple; some have darkened wings

behavior: Dancers hold their wings closed, above the body, often clapping them together

habitat: ponds & slow moving water

Jalisco flight season: flies all year

May's Dancer (*Argia mayi*)



photos: males and drawings of male's appendages; drawing of female **RARE in Jalisco** - please report all sightings

size: medium, length 30.4-32.3 mm

male: purple species with wide top thoracic stripe and coloration on the top of S1-8 and on tail tip it is restricted to S8-9 (not S10)

female: the mesostigmal plate (neck-like behind head) has erect hind margin

similar species: *Argia fumipennis* has S10 pale on top, no other male *Argia* in Jalisco has S10 dark

habitat: mid-elevation clear streams, endemic to Mexico

Jalisco flight season: months 8&9 thus far

Neotropical Bluet (*Enallagma novaehispaniae*)



photos: male and female **size:** small, length 29-35 mm

male: thorax blue or purple-blue, top stripe and side stripe parallel-sided and about the same width;

large oval eye spots; long abdomen with blue atop S8 & 9 often separated by a dark ring; top appendages forked & extend considerably beyond lower appendages

female: one form like male or somewhat green; other mostly brown

similar species: **Claw-tipped Bluet** has more blue/purple atop abdomen

behavior: Bluets usually hold their wings alongside abdomen rather than sail-like over their abdomen

habitat: pools of heavily vegetated streams **Jalisco flight season:** months 1-6,9,10,12 thus far



Claw-tipped Bluet (*Enallagma semicirculare*)



photos: male and female **size:** small, length 30-32 mm

male: blue or purple with very long, smooth upper appendages that extend considerably beyond lower appendages; S7-9 blue/purple;
top thoracic stripe wider than side stripe

female: like male but more blue

similar species: **Neotropical Bluet** has less blue/purple atop abdomen

behavior: Bluets usually hold their wings alongside abdomen rather than sail-like over their abdomen

habitat: heavily vegetated slow streams and ponds

Jalisco flight season: months 1,2,4,5,7-9,12 thus far

Familiar Bluet (*Enallagma civile*)



photos: male and female

size: small/medium, length 28-39 mm

male: markings more blue than black, S3-5 are mostly blue; top thorax stripe dark; small comma-shaped eyespots; top appendages longer than lowers, large and fin-like with pale "button," appear splayed

female: like male or tan and black

similar species: **Arroyo Bluet** has S4&5 mostly black and forked upper appendages

behavior: Bluets usually hold their wings alongside abdomen and fly low over water along shoreline or over submerged vegetation rather than sail-like over their abdomen

habitat: still waters with nearby fields

Jalisco flight season: months 2-12 thus far

Arroyo Bluet (*Enallagma praevarum*)



photos: male, appendages and tandem pair

size: small, length 26-37 mm

male: S4-7 more black than blue with each segment usually 50% darker than the preceding one; S3 usually more than 50% black, S8 & 9 blue;

thorax top stripe dark; forked upper appendages

female: pale areas blue or tan; no blue on tail

similar species: Familiar Bluet has S4-7 more blue than black

behavior: Bluets usually hold their wings alongside abdomen rather than sail-like over their abdomen

habitat: lakes, ponds, streams

Jalisco flight season: months 1,3,5,7,8,10,11 thus far

West Mexican Yellowface (*Neoerythromma gladiolatum*)



hint: when you can't see the face, look for the 3+ blue tail-end segments. All dancers and bluets have fewer segments blue

photos: male and ovipositing pair
size: small; length 28-31 mm
male: uniquely yellow on face; resembles a bright blue Bluet but with blue on 3 of the end of tail segments, including S7-9; wedge-shaped appendages
female: like male but with dull yellow-green face
similar species: like **Bluets** (*Enallagma*) but there are no Bluets with yellow faces or three segments with blue on tail end
Caribbean Yellowface (*N. cultellatum*) has S7 all black, not found nor expected in Jalisco
habitat: ponds, flooded lagoons especially with grasses and sedges
Jalisco flight season: months 2,3,5-11 thus far



Mexican Forktail (*Ischnura demorsa*)



photos: male, immature and mature female

size: small, length 21-33 mm

male: thorax sides & top have blue-green stripes; noticeable fine pale rings across each dark abdomen segment; blue tip has dark intrusions on sides; dual "forks" atop S10 are pale tipped

female: immature orange & black with S1-3 mostly orange; becomes all pale pruinose

similar species: Rambur's and Tiny Forktail lack black intrusion on S8 and have narrower blue/green stripes on thorax

habitat: weedy ponds, creeks

Jalisco flight season: months 2-9,12 thus far

Rambur's Forktail (*Ischnura ramburii*)



photos: male and immature female
size: small, length 27-36 mm
male: green-blue shoulder stripe very thin, parallel sided; tiny circular eye-spots not connected with a bar; thorax and S1-3 greenish-blue; yellowish-orange underside only on S3-7; blue surrounds S8, part of 9, not top of 10; lower appendages point straight out
female: two forms, one form is very male-like or the other is Day-Glo

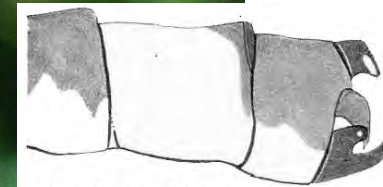


red/orange turning tan/olive with a wide black stripe on thorax top

similar species: Citrine Forktail female's abdomen not all black; Tiny Forktail male has less blue on tail-tip; Mexican Forktail male is similar with much larger fork atop end of S10 and wider side stripes

Jalisco flight season: flies all year

Tiny Forktail (*Ischnura capreolus*)



©Enrique González-Soriano



© Flávio Mendes

photos: mature male, appendages, immature females

size: very small, length ~22 mm

male: like Rambur's Forktail but smaller with less blue on tail tip and a large fork on S10, lower appendages forked with the lower fork the longest

female: lime green/yellow, blue S9 only

similar species: Rambur's Forktail female is without green; Mexican Forktail male is similar but with much larger fork atop end of S10

habitat: dense grass/sedge areas in marshes or at the edge of ponds

Jalisco flight season: months 4,6-10 thus far

Black-fronted Forktail (*Ischnura denticollis*)



© JUAN CARLOS GARCIA MORALES



© Steve Potter

photos: male and young female

size: very small, length 22-26 mm

male: no stripes or dots top of thorax; all dark above, sides of thorax blue (green in immature); blue patches on top & bottom of segments 8-9 do not touch; chartreuse underside; frail; upper appendages bent down; stigma has white margin at rear

female: thorax sides pale coral but when mature green/blue thorax sides

habitat: lakes, ponds, seeps

Jalisco flight season: months 3,5,7,8,10 thus far

Citrine Forktail (*Ischnura hastata*)



photos: male and immature and mature (insert) females

size: very small; length 21-25 mm

male: uniquely yellow on abdomen; yellow face; stigma one cell away from leading edge on front wing

female: wide black stripe atop thorax in both pruinoso mature form and immature orange form

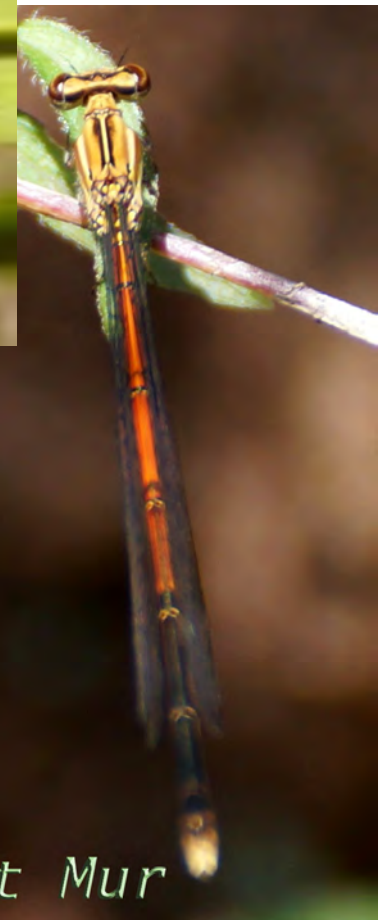
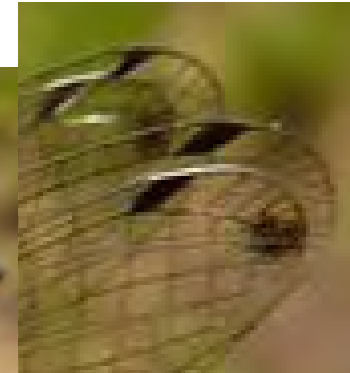
similar species: mature female **Mexican Forktail** lacks dark top stripe;

Mexican Forktail male is similar but with a much larger fork atop end of S10; no yellow on top

habitat: ponds, flooded lagoons; slow moving water

Jalisco flight season: months 1,-6,8-12 thus far

Black and White Damsel (*Apanisagrion lais*)



photos: male, wingtip and immature female

size: medium, length 35-38 mm

male: all dark with thin green lines atop thorax and pale pruinosity S8-10;
dark smudge-like look at wingtip is diagnostic

female: like teneral males, bright orange when immature; male-like when mature

behavior: hovers in the shade; seen mostly in the mornings

habitat: wet margins of canopied streams and seeps

Jalisco flight season: flies all year

Orange-striped Threadtail *Protoneura cara*)



- photos:** male and tandem ovipositing pairs
size: small, extremely thin; length 33-37 mm
male & female: both have very thin dark abdomens with pale rings; males show more orange on the thorax, eyes and face
behavior: females bend at extreme angles to oviposit, needing to "park" their very long abdomens between their wings for stability
habitat: ponds and river pools with abundant underwater vegetation reaching the surface
Jalisco flight season: flies all year



Amelia's Threadtail (*Neoneura amelia*)



photos: male and tandem pair **RARE in Jalisco** - please report any sightings

size: small, extremely thin; length 31-34 mm

male: very thin body with red head, thorax and first 3 abdominal segments, rest of abdomen black with thin pale rings

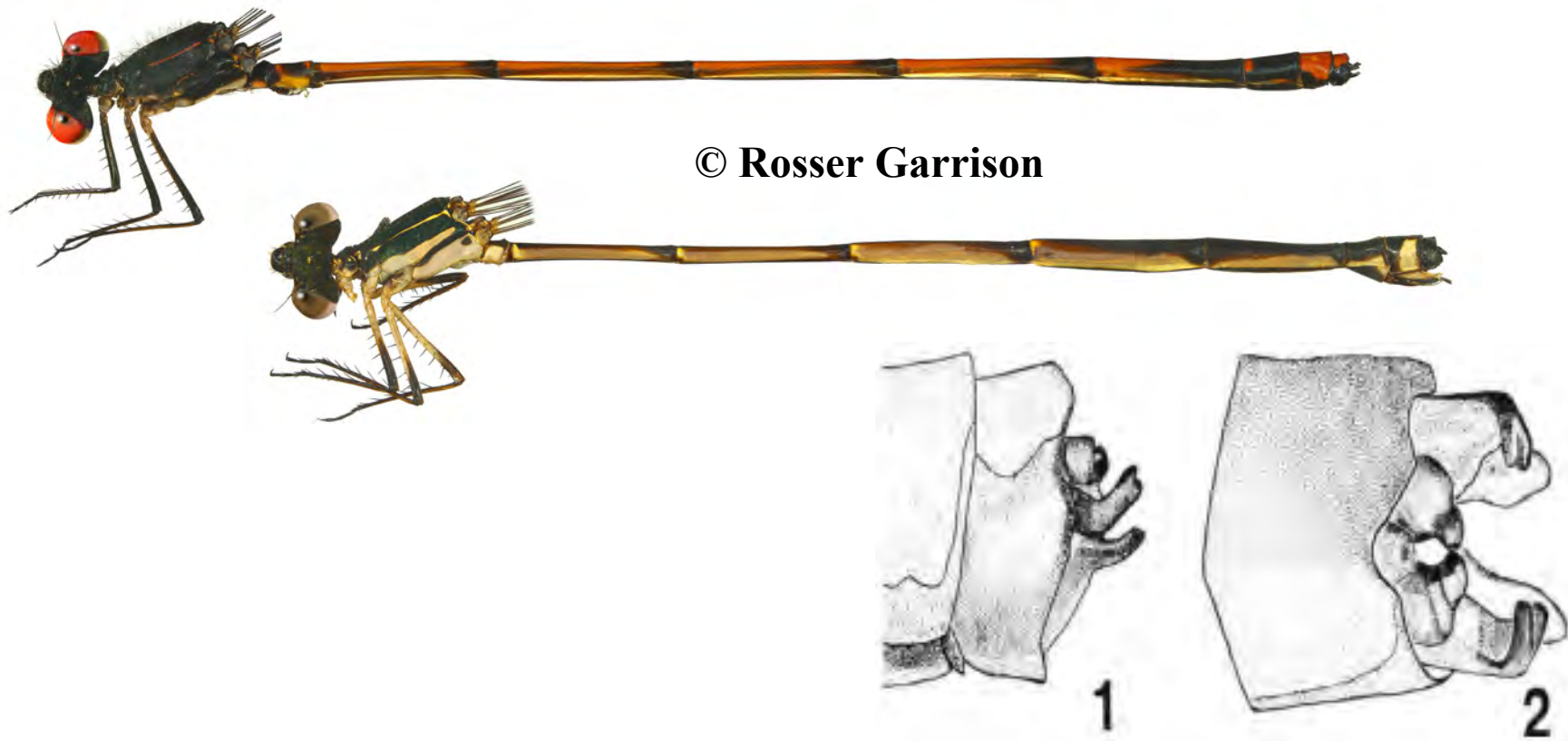
female: like male but light olive replaces red except for eye-spots

behavior: females bend at extreme angles to oviposit, needing to "park" their very long abdomens between their wings for stability

habitat: ponds and river pools with abundant underwater vegetation reaching the surface

Jalisco flight season: months 6,7,9,10,12

Ruddy Threadtail (*Protoneura rojiza*)



Figs 1-2 abdominal appendages of male in side and underside views

photos: described by Gonzales; González Soriano, E., 1992 *Protoneura rojiza spec. nov. a new damselfly from Mexico (Zygoptera: Protoneuridae)*, *Odonatologica* 21 (4): 489-493, figs. 1-8. **RARE in Jalisco** - please report any sightings

size: medium (but larger than other Threadtails in Jalisco), extremely thin, length 39-43 mm

male: black head with ivory "face"; thorax black with narrow red line, outer legs black, wings yellowish; blood red abdomen with dark markings atop the segments

female: like male but stripes on S1-2 yellow and abdomen reddish brown except S7-10 black

habitat: inland streams

Jalisco flight season: month 7 thus far

Desert Firetail (*Telebasis salva*)



© Dave Biggs

photos: male and tandem ovipositing pair

size: very small, length 23-29 mm

male: dainty and slender; all red abdomen extends well beyond wing tips, tip of abdomen without black; red face and eyes; black eye spots; thorax red with black; pale legs

female: similarly marked; color varies from brown to tan to orange-red

behavior: tandem oviposit; eggs laid in algae mats and floating decomposing vegetation

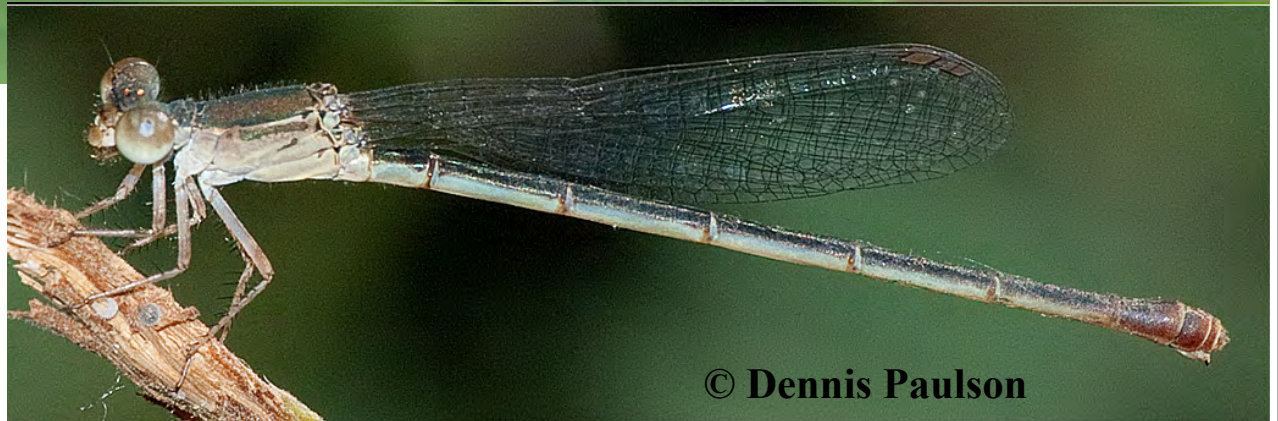
habitat: shallow waters with algae scum and/or floating decomposing vegetation; lowlands

Jalisco flight season: flies all year



© Laura Gaudette

Hyacinth Firetail (*Telebasis levis*)



photos: male and female

size: small/medium, length 28-32 mm

male: thorax top metallic black, thorax sides lighter colored

female: like male or lacks red; top of thorax dark without dark sheen

behavior: usually found on ponds and not far from them

habitat: ponds with many water hyacinths

Jalisco flight season: months 5-11 thus far

Striped Firetail (*Telebasis filiola*)



photos: male and tandem pair

size: VERY small, length 20-26 mm

male: dainty and slender; all red abdomen extends well beyond wing tips; blue-green face and bottoms of eyes; thorax black with pale blue-green stripes; tip of abdomen without black

female: head and thorax like male; abdomen dark

habitat: small weedy ponds and marshes, especially with water hyacinths

Jalisco flight season: months 1-7,9-12 thus far

Middle American Pearlwing (*Anisagrion allopterum*)



photos: male, mature and immature female

RARE in Jalisco - please report any sightings

size: length, small/medium ~32 mm

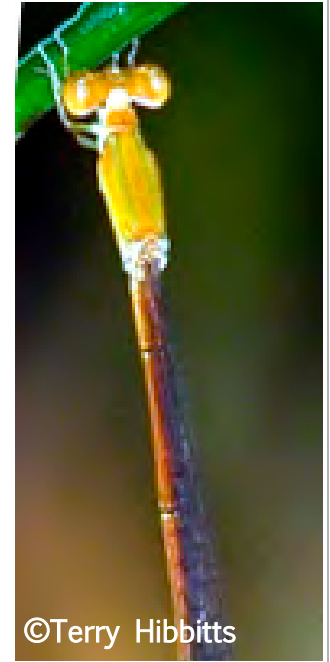
male: abdomen all black on top with some pearly blue under S1-3, & 7-9; thin pale rings S2-7 only; thorax with thick black stripe on top, side dark stripe thicker at front end, pearly blue as color on sides of thorax; small stigma with a hint of white at bottom

female: when young orange with dark near end of abdomen, there is much color variation with age, at maturity similar to male with pruinosity on tip instead of blue under the tip

habitat: mid-elevation wetlands including marshy ponds and slow streams in or out of forest

Jalisco flight season: months 4,8,9,11 thus far

Red-tipped Swampdamself (*Leptobasis vacillans*)



photos: mature male, immatures and female

RARE in Jalisco - please report any sightings

size: medium but thin and long, length ~33 mm

male: when mature, thin green stripes on thorax, legs without black bands; abdomen red, green and dark with red tip S8-10

female: change greatly as they age, if they live long enough, they are male-like

habitat: presumably swamps

Jalisco flight season: months 7,8 thus far

Cream-tipped Swampdamself (Leptobasis melinogaster)



photos: male and female

RARE in Jalisco - please report any sightings

size: medium but thin, long, length 38-40 mm

male: green eyes & eye-spots; green stripes on thorax, black bands on legs; long, thin dark abdomen with tiny rings and pale pruinosity S7-10

female: shorter abdomen than male, with conspicuous dark rings; no pruinosity; pale blue-green on thorax

habitat: shaded pools in slow moving streams, especially with tall grasses

Jalisco flight season: months 1,7,8 thus far

Lemon-tipped Helicopter (*Mecistogaster ornata*)



photo: young male, female in flight and mature male scan

size: VERY LONG/SLENDER, length 73-102 mm

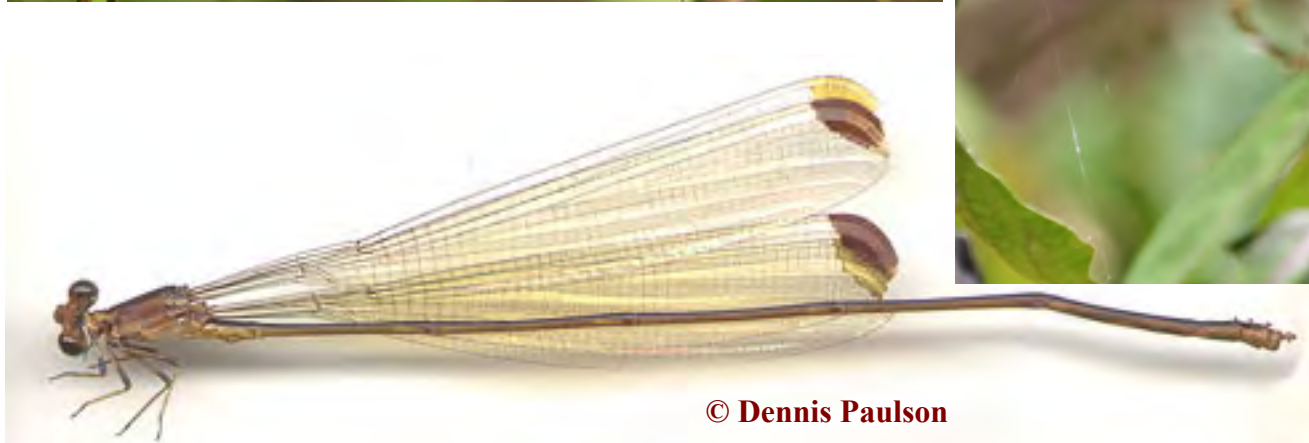
male: wing-tips yellow with very long abdomens;
in breeding season wingtips turn dark brown

female: wing-tips yellow; very long abdomens

behavior: when flying, only the colored wingtips show, making it look like a twinkling light in the jungle; prey on spiders in their webs; hang perch; females lay their eggs in puddles formed in tree holes

habitat: areas in jungle with light gaps

Jalisco flight season: months 1-4,7,9-12 thus far



Part VII: Spreadwings (Lestidae) -

- 5 species documented; wings usually held open, long stigmas
- 2 genus of Spreadwings occur in Jalisco:

Stream Spreadwings

Archilestes

—1 species

Found on moving water, long, hold their wings out to their sides



Pond Spreadwings

Lestes

—4 species

Found on still water, not as large as Stream Spreadwings, hold their wings spread out delta style



Great Spreadwing (*Archilestes grandis*)



photos: males and female

size: large, slender, length 50-62 mm

male: long abdomen is dark gray with greenish sheen, pruinose area near tip; one continuous pale side stripe on thorax side (yellow in mature); blue eyes & face; stigma dark when seen from above; top appendages semicircular, lowers are divergent; S9&10 pale pruinosity

female: like male, but tip of tail expanded; eyes and face less blue

behavior: wings held out straight from the body (spread); oviposit into tree branches overhanging wetlands

habitat: streams with overhanging Willow trees etc. where the females place their eggs into the bark

Jalisco flight season: flies all year

Plateau Spreadwing (*Lestes alacer*)



photos: male and female

size: length, medium, slender, 34-45 mm

male: broad dark stripe top of thorax, dark side stripe variable width; pale side stripe usually a blue tint & narrowing to a point at rear, slightly convex; abdomen slender, esp. middle segments; reduced dark markings abdomen top; S1,2,8-10 become pruinose with age; lower appendages 75% of uppers

female: similar to male or with less blue

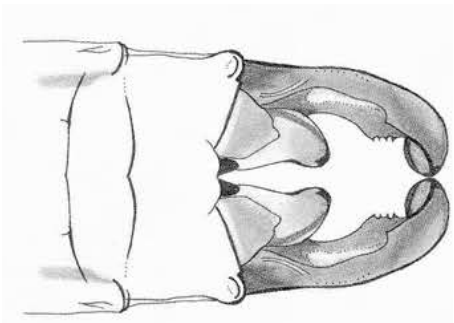
habitat: grass-edged ponds, slow streams at low elevations

Jalisco flight season: months 6-12 thus far

Blue-striped Spreadwing (*Lestes tenuatus*)



© Ramón Trinchan



© Enrique González Soriano



© Jay Keller

photos: males, appendages and female
size: medium, slender, length ~40 mm

male: large amount of blue on thorax side, second blue stripe below the upper thoracic stripe; very small amount of pruinosity at tail tip, no pruinosity on S10, only on S9

female: like male or paler blue and metallic brown

habitat: woodlands

Jalisco flight season: months 6,8,12 thus far



© Ramón Trinchan

Tikal Spreadwing (*Lestes tikalus*)



photos: male, appendages (insert) and tandem pair

size: small/medium, very slender, length ~ 33-36 mm

male: stepped black spots on the pruinose blue thorax sides; long body gray with pruinose area S8-10, while S2 is shiny and not pruinose above; short dark stigma; the top appendages are semicircular and the lower ones are somewhat so, and the lower ones are almost as long as the uppers

female: brown/tan with some green on side of thorax, ovipositor very large extending to end of abdomen

behavior: wings held out delta-style from the body (spread); females place eggs in vegetation above where water will pool

habitat: shallow ponds and marshes, typically those that are dry in the dry season and re-flooded in next wet season

Jalisco flight season: months 2,5,8 thus far

Chalky Spreadwing (*Lestes sigma*)



photos: mature male and ovipositing pair

size: medium, slender, length 41-45 mm

male: entire thorax becomes pruinose chalky whitish-gray; dark abdomen with segments 8&9 pruinose while S2 is 2/3 pruinose on top; blue eyes, short dark stigma can be bi-colored; lower appendages form an S-curve; immatures are tan with small dark spot on each side of thorax

female: similar to male; dark abdomen with S8-10 pruinose; short ovipositor

behavior: wings held out delta-style; females often place eggs in vegetation above where water will pool

habitat: shallow ponds

Jalisco flight season: months 1,2,6,8-10,12 thus far

Part VIII: Other Damselfly Families—2 other families are documented:

Shadowdamsels (Platystictidae) & **Bannerwings (Polythoridae)**

Desert Shadowdamsel (*Palaemnema domina*)



photos: male and female, **RARE in Jalisco** - please report any sightings

size: medium, slender, length 42-45 mm

male: long abdomen dark with thin pale rings, S8&9 blue, S10dark;
white frons; bright blue "neck"

female: like male but less blue or tan where male is blue

behavior: secretive; active at dawn and dusk and during light rains;
dangle perch mid-day in cavities and overhanging cliffs

habitat: places with high humidity in deep shade

Jalisco flight season: months 7-9 thus far

Blue Cora (*Cora marina*)



photos: male and female **RARE in Jalisco** - please report any sightings

size: medium, but bulky, length 42-45 mm

male: bright blue; amber-tinted wings with dark tips, long stigmas;
blue atop S1-8, S9&10 all dark; blue "neck"; dark eyes

female: bulky and dark with light markings, wings less colored than male
but with long stigmas

habitat/behavior: rocky forest streams where they perch in shade **Jalisco**

flight season: months 8,9 thus far

Note: nymph have gills under abdomen, unusual among living odonates



Glossary:

anal loop: cluster of cells that are foot-shaped in the hind wing of some skimmers

appendages: extensions from the tip of the abdomen. Males use theirs to grasp the female during mating

cerci: upper appendages of male dragonfly

cf.: from the Latin "conferre," meaning "to compare," used in biology to represent uncertain identification but similar to the indicated species

club: referring to the expanded abdomen end, often seen on male Clubtails and a few other species

costa: leading vein of wing

frons: the uppermost part of the "face," like our forehead, but situated below and between the eyes

labrum: part of the "face," akin to an upper lip

nodus: indentation at midpoint of wing

ovipositor/oviposit: structure for egg laying near the end of the female's abdomen/act of laying eggs

pruinose/pruinosity: waxy coating a dragonfly can secrete to cover its original coloration, like the waxy coating on a plum

S(1-10): segment on abdomen, with S1 nearest the head

stigma: small thickened and darkened area on the leading wing edge near the tip

TBD: to be determined

T-spot: spot atop face of darners (*Aeshnidae*) that is useful in making identifications

Notes:

This guide could not exist without the skill and generosity of the following photographers:
(listed in order of number of photos used and then in alphabetic order)

Dave Biggs
Pierre DeViche
Doug Danforth
Terry Carr
Laura Gaudette
Dennis Paulson
Greg Lasle
Julio Alvarez Ruiz
Rosser Garrison
Troy Hibbitts
Jim Burns
Enrique González Soriano
Carlos V. Macias
Yesenia Vega
Kathy Biggs
.
Juan Carlos Garcia
Cindy Skeie
Netta Smith
Ricardo Arrendondo Torres
.
Tripp Davenport
Alfredo D. Euan
Leonora K. Gloyd
Alvaro X. Hernandez
Terry Hibbitts
Plazi Treatment Bank
Francisco Farriols Sarabia
.
Juan Alvarez
J.Belle
Georgia Born
Ray Bruun
Carlos Palomera Garcia

Omar Carrea Rodrogiez
Juan Cruzado
Leslie Flint
Fernando Flores Emmanuel
Guevara Lazcano
Clarence Kennedy
Gerard Marron
Rodrigo Meza Fonseca
Peter Moulton
Art Mur
Erland Refling Nielsen
Ana Nuno
Steve Potter
Ruben A. Ramirez Garcia
Pedro Rodriuez
Doc Shark
David F. Smith
BJ Stacey
Jay Thesken
Jorge Vargas Ramirez
.
Drew Baxter
Azucena Briones Munoz
Jon Church
Steve Collins
Juan Cruzado Cortes
Miguel L. Cueller
Mark Dennis
Francisco Farriols
Jaguar Gozando Sciva
Emmanuel Guevara Lazcano
William A. Haber
Vincent Heijden
Andrew Herbabdez Mauricio

Leonardo Hernández Escudero
Juan Pablo Gonzalez
Hernandez Sandez
Eric Hough
Rich Hoyer
Arlene Ibarra V
Eric Isley
Hannia Itzel
Francisco Izquierdo
Paul Johnson
Anneke Jonker
Jay Keller
Jose E Mendoza
Kevin Meza Fernandez
Favio Mendes
Bob Miller
Veronik Moon
Los Naranjos Retreat
Liam O'Brien
Ron Oriti
Gilberto PonceTejeda Eduardo
A. Recillas
Liam Ragan
Owen Ridgen
Mayela Rodriguez Gonzales
Alam Sanchez
Christina Schwartz
Robert Stevenson
Owen Strickland
Luis Trinchan
Ramon Trinchan
Ken-ichi Ueda
Karen Vaquez
MarcelineVandewater-Bruno
Carolyn Wilson



© Kathy Biggs 2024 Last updated 3-'24

Companion Website - <https://bigsnest.powweb.com/southwestdragonflies/JaliscoOdes/JaliscoLINKS.html>